



Science Press

Contents lists available at ScienceDirect

## Journal of Integrative Medicine

journal homepage: [www.jcimjournal.com/jim](http://www.jcimjournal.com/jim)  
[www.journals.elsevier.com/journal-of-integrative-medicine](http://www.journals.elsevier.com/journal-of-integrative-medicine)

## Methodology

# *In silico* screening of Chinese herbal medicines with the potential to directly inhibit 2019 novel coronavirus

Deng-hai Zhang<sup>a,\*</sup>, Kun-lun Wu<sup>b</sup>, Xue Zhang<sup>a</sup>, Sheng-qiong Deng<sup>c</sup>, Bin Peng<sup>a</sup><sup>a</sup> Shanghai Health Commission Key Lab of Artificial Intelligence (AI)-Based Management of Inflammation and Chronic Diseases, Sino-French Cooperative Central Lab, Shanghai Pudong Gongli Hospital, Secondary Military Medical University, Shanghai 200135, China<sup>b</sup> Department of Traditional Chinese Medicine, Shanghai Pudong Gongli Hospital, Secondary Military Medical University, Shanghai 200135, China<sup>c</sup> Department of Research Affair Management, Shanghai Pudong Gongli Hospital, Secondary Military Medical University, Shanghai 200135, China

## ARTICLE INFO

## Article history:

Received 7 February 2020

Accepted 13 February 2020

Available online 20 February 2020

## Keywords:

2019-nCoV

Wuhan coronavirus

Drugs

Chinese herbal

Pneumonia

Natural compounds

Molecular docking

Network pharmacology

## ABSTRACT

**Objective:** In this study we execute a rational screen to identify Chinese medical herbs that are commonly used in treating viral respiratory infections and also contain compounds that might directly inhibit 2019 novel coronavirus (2019-nCoV), an ongoing novel coronavirus that causes pneumonia.**Methods:** There were two main steps in the screening process. In the first step we conducted a literature search for natural compounds that had been biologically confirmed as against severe acute respiratory syndrome coronavirus or Middle East respiratory syndrome coronavirus. Resulting compounds were cross-checked for listing in the Traditional Chinese Medicine Systems Pharmacology Database. Compounds meeting both requirements were subjected to absorption, distribution, metabolism and excretion (ADME) evaluation to verify that oral administration would be effective. Next, a docking analysis was used to test whether the compound had the potential for direct 2019-nCoV protein interaction. In the second step we searched Chinese herbal databases to identify plants containing the selected compounds. Plants containing 2 or more of the compounds identified in our screen were then checked against the catalogue for classic herbal usage. Finally, network pharmacology analysis was used to predict the general *in vivo* effects of each selected herb.**Results:** Of the natural compounds screened, 13 that exist in traditional Chinese medicines were also found to have potential anti-2019-nCoV activity. Further, 125 Chinese herbs were found to contain 2 or more of these 13 compounds. Of these 125 herbs, 26 are classically catalogued as treating viral respiratory infections. Network pharmacology analysis predicted that the general *in vivo* roles of these 26 herbal plants were related to regulating viral infection, immune/inflammation reactions and hypoxia response.**Conclusion:** Chinese herbal treatments classically used for treating viral respiratory infection might contain direct anti-2019-nCoV compounds.Please cite this article as: Zhang DH, Wu KL, Zhang X, Deng SQ, Peng B. *In silico* screening of Chinese herbal medicines with the potential to directly inhibit 2019 novel coronavirus. *J Integr Med.* 2020; 18(2): 152–158.

© 2020 Shanghai Changhai Hospital. Published by Elsevier B.V. All rights reserved.

## 1. Introduction

Toward the end of December 2019, a novel coronavirus (2019-nCoV) with human-to-human transmission and severe human infection, originating in Wuhan, China, was identified [1]. This virus has affected many persons in China and spread to other countries in a very short time. On January 30, 2020, the Director-

General of the World Health Organization declared that the outbreak of 2019-nCoV constitutes a public health emergency of international concern and issued temporary recommendations under the *International Health Regulations* [2]. According to the Daily Report of China National Health Commission, as of this writing on February 2, 2020, 14,488 cases, including 304 deaths, have been confirmed in China; 146 cases, including 1 death, have also been reported among 23 other countries. This pandemic is still ongoing, so it is urgent to find new preventive and therapeutic agents as soon as possible. In addition, commensurate with the risk, strong

\* Corresponding author.

E-mail address: [shanghai\\_zhang@hotmail.com](mailto:shanghai_zhang@hotmail.com) (D.H. Zhang).

measures for early detection, isolation and treatment of cases, as well as minimization of transmission through social interaction must be implemented.

While specific vaccines and antiviral agents are the most effective methods to prevent and treat viral infection, there are not yet effective treatments that target the 2019-nCoV. Development of these treatments may require months or years, meaning that a more immediate treatment or control mechanism should be found if possible. Herbs used in traditional Chinese medicine present a potentially valuable resource to this end. The effectiveness of herbal treatment to control contagious disease was demonstrated during the 2003 severe acute respiratory syndrome (SARS) outbreak [3]. As such, the Chinese government is encouraging the use of herbal plants in fighting this new viral pneumonia. However, the application of herbal treatment is mainly guided by the type of herb (based on the catalogue of classic literature on herbs) and the patient's symptoms or signs. There is often not enough information to predetermine whether the herbs in question can directly target the viral cause, in other words, herbal usage is generally not guided by viral pathology. We think more detailed knowledge about the direct antiviral effects of different plants would be greatly helpful to the doctors selecting them.

In fact, after the outbreak of SARS, many groups dedicated themselves to finding anti-coronavirus agents, including some natural compounds that exist in traditional Chinese herbal medicines [4–12]. The coronavirus encodes more than one dozen proteins, some of which are essential to viral entry and replication. Among these proteins, the most well-studied are papain-like protease (PLpro), 3C-like protease (3CLpro) and spike protein. Coronavirus PLpro not only processes the viral polypeptide onto functional proteins but is also a deubiquitinating enzyme that can dampen host anti-viral response by hijacking the ubiquitin (Ub) system. For example, SARS PLpro cleaves ISG15, a two-domain Ub-like protein, and Lys48-linked polyUb chains, releasing diUbLys48 products [13,14]. SARS-3CLpro is a cysteine protease indispensable to the viral life cycle [15]. Coronavirus spike protein uses angiotensin-converting enzyme 2 as a receptor to help the virus enter cells [16]. These three proteins make attractive targets for drug development.

Through *in silico* and biological processing, a series of small molecules, including those from natural compounds, have been screened and confirmed to directly inhibit these important proteins in SARS or Middle East respiratory syndrome (MERS) coronavirus [17–23]. The gene sequence of 2019-nCoV has been released, which suggests high similarities between the main proteins in this virus and those previously identified in SARS-Cov or MERS-Cov [24,25]. In this sense, previously reported anti-SARS-Cov or anti-MERS-Cov natural compounds may become a valuable guide to finding anti-coronavirus (2019-nCoV) herbal plants among the traditional Chinese herbs used to treat viral pneumonia.

It is a challenge to screen out the herbs containing anti-coronavirus (2019-nCoV) compounds from the large number of those possibly being used for patients infected with this pathogen, especially in very short time. Here, we propose two principles to guide such work: oral effectiveness and traditional usage compatibility. The first principle refers to the fact that most Chinese herbal plants are orally ingested after boiling with water, meaning that the anti-coronavirus (2019-nCoV) ingredients in selected plants should be absorbable via oral preparation. The second principle recognizes that candidate plants should be consistent with the type classifications for traditional herbal usage, since type-guided applications are integral to herbal use, as mentioned above. Following these two principles, we used a 6-step selection process (3 for each principle), including drug-likeness, evaluation of oral bioavailability, molecular docking, network pharmacology analysis and other methods to identify herbs that have both a high possibil-

ity of containing effective anti-coronavirus (2019-nCoV) compounds and are classified as treating virus-caused respiratory infection.

## 2. Materials and methods

### 2.1. Literature search and compound selection

PubMed literature concerning natural compounds against SARS or MERS coronavirus activity was selected using the query “coronavirus AND inhibitor AND (SARS OR MERS OR SARS-CoV OR MERS-CoV).” After careful reading of the studies returned by this search, the natural compounds that had biologically confirmed antiviral activities were compared with the Traditional Chinese Medicine Systems Pharmacology database (TCMSP, <http://www.tcmspw.com/browse.php?qc=herbs>), the Encyclopedia of Traditional Chinese Medicine (ETCM, <http://www.nrc.ac.cn:9090/ETCM/>) and SymMap (<https://www.symmap.org/>). Natural compounds both associated with antiviral activity and contained in herbs were examined in the next step of our study.

### 2.2. ADME screening of natural compounds

Since Chinese herbal treatments are always taken orally after boiling with water, an *in silico* integrative model of absorption, distribution, metabolism and excretion (ADME) was used to screen for natural compounds that may be bioactive via oral administration. The indices used for the screening include evaluation of oral bioavailability, Caco-2 permeability, drug-like value, and drug half-life. The threshold values indicating effectiveness for these four indices were > 30%, > -0.4, > 0.18 and > 3 h, respectively, as recommended by Hu et al [26]. The values of these four indices can be obtained from the TCMSP database.

### 2.3. Protein-molecular docking

We used molecular docking software AutoDock 4 to perform protein compound docking analysis, according to the following procedure: (1) We built three-dimensional (3D) structure files of the proteins of interest. We used the online server SWISS-MODEL (<https://swissmodel.expasy.org/>) to build the 3D structures of the proteins of interest by template-based modeling, these template structures being the reported 3D structures of the corresponding proteins from SARS-CoV. The models built were of Protein Data Bank (PDB) format. (2) To retrieve the required 3D structure files of compounds, the structure data file (SDF) format of compounds were retrieved from the PubChem website and then converted to PDB format by Discovery Studio. (3) AutoDock 4.2 was used to prepare PDBQT format files for target and ligand screening (Target.pdbqt and Ligand.pdbqt) and grid and docking parameter files (a.gpf and a.dpf). (4) Molecular docking was performed using AutoDock in Cygwin and finally the results were analyzed. The process and parameters used were detailed by Rizvi et al [27].

### 2.4. Plant selection

Herbs were selected through three steps. (1) Primary selection: molecules chosen from the above steps were used as input for the TCMSP, ETCM and SymMap to search for plants containing that input and the plants were filtered by the numbers of antiviral compounds they contain. Those containing 2 or more antiviral compounds were selected for the next step. (2) Classic usage catalogue cross-reference: only herbs traditionally used to treat viral respiratory infection were retained for further study.

(3) Predication of general effects *in vivo* with network pharmacology analysis, which is detailed as follows.

### 2.5. Network pharmacology analysis

The TCMSP provided the main components of each herb and the protein targets for each component. We identified the reported chemical constituents for each plant in the final analysis and used the ADME indices listed above to find the orally absorbable and drug-like compounds for the plant. The protein targets of these compounds were downloaded from the TCMSP database. All protein targets for each individual plant were used as input for the String online server (<https://string-db.org/>) to perform protein–protein interaction analysis and pathway enrichment. Kyoto Encyclopedia of Genes and Genomes (KEGG) pathways enriched (with  $P < 0.01$ ) by the input were downloaded.

All data were processed using the statistical language R (3.6.2), unless otherwise specified.

## 3. Results

### 3.1. Overlapping of natural compounds biologically confirmed to be anti-SARS or anti-MERS coronavirus in literature and in Chinese herbal database

We received 261 hits from conducting our search in the PubMed database. After careful evaluation of the abstracts from these citations we downloaded and carefully analyzed the full text of 23 highly relevant papers. The natural compounds reported to have biologically confirmed anti-coronavirus activity were identified and then compared to the ingredients listed in three Chinese herbal databases. The result was 115 overlapping ingredients, which we used for further testing (Fig. 1).

### 3.2. Filtration of compounds selected by ADME

The antiviral activities of the 115 natural compounds were reportedly confirmed with enzyme-based (cell-free) or cell-based experimental systems. To be utilized as a Chinese herbal medicine, they must be absorbable via oral prescription. Therefore, we

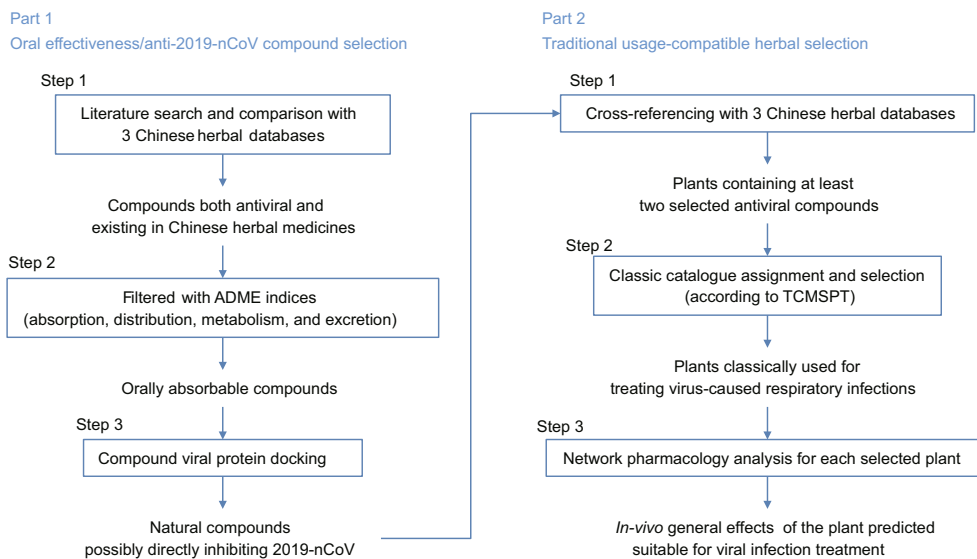
performed ADME screening for the 115 natural compounds, reducing the number of candidates to 13.

### 3.3. Docking between selected compounds and their reported targets

To perform the docking analysis, the 3D structure files of 2019-nCoV PLpro, 3CLpro and spike proteins were built based on the corresponding SARS-CoV templates, i.e., PDB 5e6j, 1uj1 and 6cad, respectively. Then, molecule–protein docking was carried out between the molecules and their reported targets. If the molecules were reported to inhibit viral entry, they were docked with spike proteins (Table 1). Each separate analysis returned positive results (Table 1, Fig. 2 and online supplementary Fig. S1), indicating the natural compounds we selected might directly inhibit 2019-nCoV. The molecules selected to target PLpro (M2, M3, M7, M9, M10, M11 and M13) mainly bound in the region between the thumb and palm domains, which might interfere with substrate entering this enzyme's active sites, located at the bottom of the two domains [29]. The molecules reported to inhibit 3CLpro (M1, M2, M3, M4, M5, M7, M8, M10, M11, M12 and M13) mainly entered the region between domains 2 and 3, and this region is important for 3CLpro to form a dimer [30]. M6 was reported to inhibit viral entry, accordingly it bound the fusion cone of spike protein; this cone structure is important for viral membrane fusion [31] (Fig. 2 and online supplementary Fig. S1).

### 3.4. Selection of antiviral herbal plants

The 13 molecules passing the three-round selection process were then compared to the three Chinese herbal databases, and we found 230 herbs containing these molecules (online supplementary file Table S1). We then evaluated these herbs for those containing 2 or more of the 13 natural compounds, leaving 125 results. We cross-referenced the 125 results with the classic categorizations for herbal usage in the TCMSP database, finally choosing 11 types that are traditionally used to treat viral respiratory infections. There are 26 herbal plants within the 11 types. The timeframe during the course of a viral infection that each of these 26 herbal plants (Table 2) should be used was also documented by seeking advice from senior practitioners of traditional Chinese medicine. For example, plants catalogued as antipyretic detoxifying drugs,



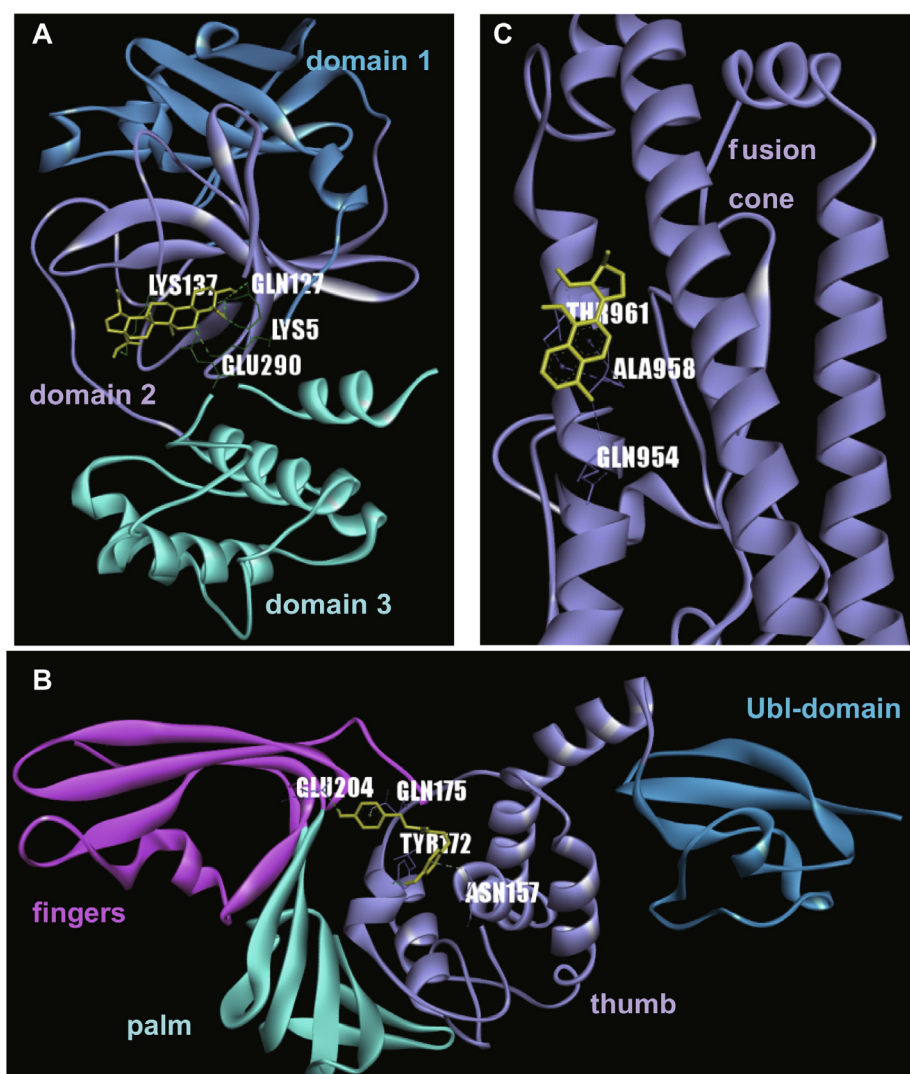
**Fig. 1.** Workflow scheme. The work is divided into two main parts, natural compound selection and herbal plant selection. Each part consists of three steps. As detailed in the text, oral effectiveness is important in compound selection, while in the plant selection portion, the selected herbs should be compatible with the classic usages of herbal treatment in traditional Chinese medicine. TCMSP: Traditional Chinese Medicine Systems Pharmacology.

**Table 1**

The molecules and their docking proteins, binding energy (kcal/mol).

No.	Molecular name	Targets or inhibition	Reference	Docking (binding energy)		
				PLpro	3CLpro	Spike
M1	Betulinic acid	Replication, 3CLpro	[16]	Undo	-4.23	Undo
M2	Coumaroyltyramine	PLpro and 3CLpro	[11,20]	-3.22	-4.18	Undo
M3	Cryptotanshinone	PLpro and 3CLpro	[18]	-5.25	-6.23	Undo
M4	Desmethoxyreserpine	Replication, 3CLpro, and entry	[6]	Undo	-3.52	Undo
M5	Dihomo- $\gamma$ -linolenic acid	3CLpro	[7]	Undo	-3.88	Undo
M6	Dihydrotanshinone I	Entry, and spike protein	[28]	Undo	Undo	-5.16
M7	Kaempferol	PLpro and 3CLpro	[11]	-2.15	-6.01	Undo
M8	Lignan	Replication, 3CLpro	[16]	Undo	-4.27	Undo
M9	Moupinamide	PLpro	[20]	-3.05	Undo	Undo
M10	N-cis-feruloyltyramine	PLpro and 3CLpro	[11,20]	-3.11	-4.31	Undo
M11	Quercetin	PLpro and 3CLpro	[20]	-4.62	-6.25	Undo
M12	Sugiol	Replication, 3CLpro	[16]	Undo	-6.04	Undo
M13	Tanshinone IIa	PLpro and 3CLpro	[18]	-5.02	-5.17	Undo

3CLpro: 3C-like protease; PLpro: papain-like protease.



**Fig. 2.** Docking between selected natural compounds and their reported targets. A. PLpro and natural compound M2; B. 3CL and M1; C. Spike and M6. Docking is performed with AutoDock 4 which is detailed in Materials and Methods. The protein structure files are listed in Table 1. Protein domains are shown in different colors, while natural compounds are shown in dark yellow. The amino acids labeled were those interacting with compound. 3CLpro: 3C-like protease; PLpro: papain-like protease.

qi-reinforcing drugs, antitussive antiasthmatics, pungent cool diaphoretics and phlegm-resolving medicines may all be used throughout the course of infection, whereas drugs belonging to the interior warming group may be best utilized in prevention.

### 3.5. Network analysis of possible effects or mechanisms

Each of the potentially effective herbal remedies contains many ingredients in addition to the antiviral ones found here. Thus, the

**Table 2**  
The 26 Chinese herbals screened and the possible time for usage.

No.	Herbal name		Number*	Classic catalogue		Time to use
	Latin	Chinese		Latin/English	Chinese	
1	<i>Forsythiae fructus</i>	连翘	3	Antipyretic detoxifying	清热解毒药	Full course
2	Licorice	甘草	3	Qi-reinforcing	补气药	Full course
3	<i>Mori cortex</i>	桑白皮	3	Antitussive antiasthmatics	止咳平喘药	Full course
4	<i>Chrysanthemi flos</i>	菊花	2	Pungent cool diaphoretics	辛凉解表药	Full course
5	<i>Farfarae flos</i>	款冬花	2	Antitussive antiasthmatics	止咳平喘药	Full course
6	<i>Lonicerae japonicae flos</i>	金银花	2	Antipyretic-detoxifying drugs	清热解毒药	Full course
7	<i>Mori follum</i>	桑叶	2	Pungent cool diaphoretics	辛凉解表药	Full course
8	<i>Peucedani radix</i>	前胡	2	Phlegm-resolving medicine	化痰药	Full course
9	<i>Rhizoma fagopyri cymosi</i>	金荞麦	2	Antipyretic detoxifying	清热解毒药	Full course
10	<i>Tamaricis cacumen</i>	西河柳	3	Pungent-warm exterior-releasing medicine	辛温解表药	Early
11	<i>Erigeron breviscapus</i>	灯盏细辛	2	Pungent-warm exterior-releasing medicine	辛温解表药	Early
12	<i>Radix bupleuri</i>	柴胡	2	Pungent cool diaphoretics	辛凉解表药	Early
13	<i>Coptidis rhizoma</i>	黄连	2	Heat-clearing and dampness drying medicine	清热燥湿药	Middle
14	<i>Houttuyniae herba</i>	鱼腥草	2	Antipyretic-detoxifying	清热解毒药	Middle
15	<i>Hoveniae dulcis semen</i>	枳椇子	2	Antipyretic-detoxifying	清热解毒药	Middle
16	<i>Inulae flos</i>	旋覆花	2	Phlegm resolving medicine	化痰药	Middle
17	<i>Eriobotryae folium</i>	枇杷叶	3	Antitussive antiasthmatics	止咳平喘药	Middle and later
18	<i>Hedysarum multijugum maxim.</i>	黄芪	3	Qi-reinforcing	补气药	Middle and later
19	<i>Lepidii semen descurainiae semen</i>	葶苈子	3	Antitussive antiasthmatics	止咳平喘药	Middle and later
20	<i>Ardisiae japonicae herba</i>	矮地茶	2	Antitussive antiasthmatics	止咳平喘药	Middle and later
21	<i>Asteris radix et rhizoma</i>	紫菀	2	Antitussive antiasthmatics	止咳平喘药	Middle and later
22	<i>Euphorbiae helioscopiae herba</i>	泽漆	2	Diuretic dampness-excreting	利水渗湿药	Middle and later
23	<i>Ginkgo semen</i>	白果	2	Antitussive antiasthmatics	止咳平喘药	Middle and later
24	<i>Anemarrhenae rhizoma</i>	知母	3	Fire-purging	清热泻火药	Later
25	<i>Epimrdii herba</i>	淫羊藿	2	Yang-reinforcing	补阳药	Later
26	<i>Fortunes bossfern rhizome</i>	贯众	2	Warming interior	温里药	Prevention

\* The number of antiviral natural compounds contained in the plant.

general effects of each plant should be examined by combining the effects of all of the orally absorbable and biologically active ingredients in it. To evaluate the possible general *in vivo* effects of each of our identified herbs, we used the ADME indices listed above to examine each of the orally absorbable and drug-like ingredients recorded in the TCMSDB database for each plant. We then extracted the target proteins for each ingredient which had passed the screening process. All proteins belonging to a single plant were combined as input on the online protein-protein interaction analysis server, String, to find the pathway enrichment.

For the 26 herbs, about 1/3 of the top 30 KEGG-enriched pathways (mean = 11) were related to regulating viral infection, immune/inflammatory reactions and hypoxia response, indicating that they are potentially effective treatments for viral respiratory infection (Fig. 3 and online supplementary Fig. S2). Note that some of the herbal plants selected here had been reported to be effective for SARS-CoV infection in 2003 (online supplementary Table S2).

#### 4. Discussion

In this work, we undertook a multiple step selection process and screened out 26 herbal plants with a high probability of directly inhibiting the novel coronavirus (2019-nCoV), possibly providing instant help in the prevention and treatment of the pneumonia that it can cause. While mainly in China at this point, viral spread is ongoing and has affect persons worldwide.

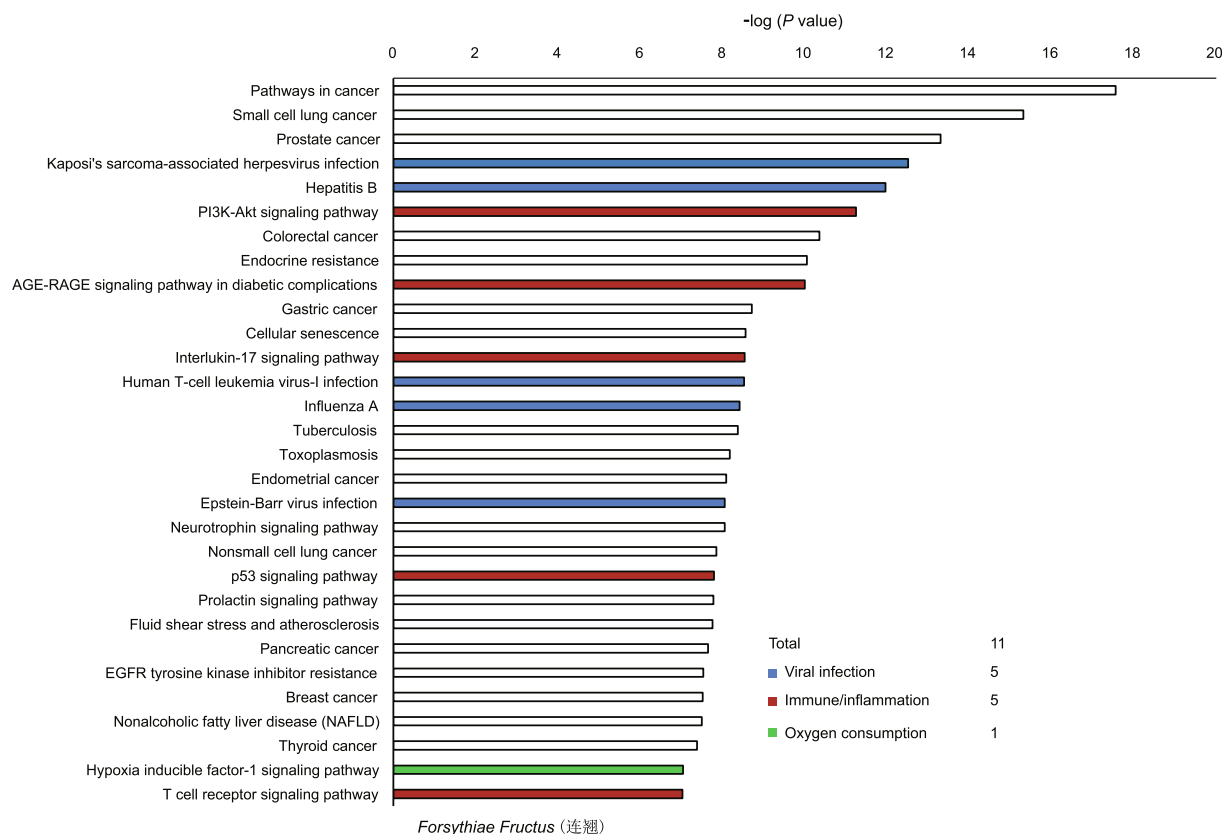
Two principles guided our screening work. The first is that the anti-coronavirus (2019-nCoV) components contained in the source plants should be absorbable via oral prescription. This principle requires that the herbs selected should contain biologically proven anti-coronavirus (2019-nCoV) ingredients, and that these natural compounds should pass the drug-likeness and oral bioavailability evaluations. Therefore, we conducted a three-step screening process. First, we extracted natural compounds verified in PubMed as being effective in treating SARS or MERS coronavirus and then

cross-checked these compounds in the Chinese herbal databases. There were 115 overlapping compounds. This method was an expeditious way to identify natural components both pre-existing in Chinese herbal treatment and having a high possibility of anti-coronavirus (2019-nCoV) activity. This is important, as the anti-coronavirus effects of the selected compounds have been biologically confirmed, and the genetic similarities between coronavirus (2019-nCoV) and SARS or MERS coronavirus are high [24,25].

The anti-coronavirus effects of the natural compounds screened by the above method have been mainly confirmed *in vitro* by direct loading onto cultured cells, thus it does not guarantee their effectiveness *in vivo*, especially with oral preparation—the principal way in which Chinese herbals are administered. Therefore, to meet the first principle, we ran ADME filters on the natural compounds selected by 4 indices, as used by Hu et al. [26]. Among the 115 compounds highlighted by our first step, only 13 passed this screening, showing the necessity of such a test.

The novel coronavirus has some mutations when compared to SARS or MERS coronavirus, so the natural compounds effectiveness against the two previous coronaviruses might not be present in the new virus. To reduce this risk, and as the third step of our first principle, we reconstructed the 3D structure of the new coronavirus using the reported structures of SARS and MERS coronavirus proteins as a guide, and then used molecular docking technology to simulate whether the 13 natural compounds selected could combine with the structures we constructed for the new coronavirus proteins. All 13 compounds could bind to the proteins as predicted for the new coronavirus. We believe that the high success rate of our docking screening was due to the high genetic similarity between the new coronavirus and the SARS or MERS virus [24,25].

Our second principle for screening should also be emphasized and elaborated upon. It states that the selected herbal plants must conform to traditional usages. There are many kinds of Chinese herbs that have been used for thousands of years. Based on this rich history and experience, Chinese herbal medicines are divided



**Fig. 3.** Kyoto Encyclopedia of Genes and Genomes pathways enriched for the herb *Forsythiae Fructus* in network pharmacology analysis. The top 30 pathways are shown. The blue, red and green bars represent the pathways related to viral infection, immune/inflammation response, and hypoxia response, respectively. EGFR: epidermal growth factor receptor; AGE: advanced glycation end product; RAGE: receptor for AGE.

into different types, each type dedicated to certain kinds of diseases. Ignoring these grouping guidelines can lead to serious side effects. Therefore, as a further condition for the medicine screened here, we verified that they have been routinely used to treat viral pneumonia. To meet this principle, we conducted another three-step screening process for the herbal plants.

First, we searched the Chinese medicine database for herbs containing the 13 natural compounds identified. Herbs containing at least 2 of these potentially useful compounds were selected, and a total of 125 herbal plants were identified. The second step in targeted plant selection was based on type classification. Of the 125 results, only 26 herbs were found to be routinely used in treating viral respiratory infection.

Finally, network pharmacological analysis was performed to predict the possible therapeutic effects of these 26 plants. Because Chinese herbal medicines contain many ingredients, and multiple absorbable ingredients might exert their effects on the body, the general effects of herbs may be dictated by all of the absorbable ingredients they contain. With this consideration in mind, we extracted the recorded ingredients of each of the plants selected from the Chinese medicine database and screened these ingredients for drug-likeness and oral availability (via ADME filter) [26,32]. The target proteins of all ingredients passing ADME selection were used for network enrichment to predict the general effects of the herbal plants. For all the plants analyzed, nearly half of the top 30 pathways enriched in KEGG are related to antiviral, immune/inflammatory responses and hypoxia response indicating that these herbs are suitable for anti-viral usage. In fact, some of the herbal plants selected here had been reported effective in against SARS-CoV infection in 2003 (online supplementary Table S2). We thought that the general antiviral and immune/inflammation effects predicted for the 26 plants are correlated with

the fact that these plants were selected according to Chinese herbal type classifications.

Of course, it should be pointed out that Chinese herbs that have not been identified through this screening process may still have beneficial effects. Further, considering that the biologically validated natural compounds reported in the literature cannot cover all antiviral natural compounds, and the natural compounds included in the Chinese medicine database are not complete, the process that we have followed may have excluded herbs that would be well suited to this treatment. Nevertheless, the purpose of this screening was to provide a rational approach for selecting Chinese herbal medicines with a high potential efficacy in treating 2019-nCoV and related viruses. The specific dosage and usage of each herb should be determined based on patients' manifestations. Finally, the key step in this screening was molecular docking. The 3D structures of the proteins used here are based on reported gene sequences. If the virus mutates during transmission, a new screening is recommended.

In conclusion, this work has identified several Chinese medicinal plants classified as antiviral/pneumonia-effective that might directly inhibit the novel coronavirus, 2019-nCoV. Additionally, we propose screening principles and methods which may provide guidance in screening antiviral drugs from other natural drug databases.

#### Author contributions

DZ conceived the study, participated in its design, coordination, and all the work processes. KW participated in herbal selection. XZ participated in data collection and network pharmacology analysis. SD helped to collect data. BP helped to draft the manuscript.

## Funding

This work is supported by Shanghai Leading Talent Grants in Medicine (No. 2019LG26), Shanghai Traditional Chinese Medicine Content Construction Innovation Project (No. ZY3-CCCX-3-7001) and Postdoctoral Funding of Shanghai Gongli Hospital (No. GLBH2017002).

## Acknowledgement

Thanks to Mr. Steven Schwab for tidying up the English expressions and grammar.

## Conflicts of interest

The authors declare no competing interests.

## Appendix A. Supplementary data

Supplementary data to this article can be found online at <https://doi.org/10.1016/j.joim.2020.02.005>.

## References

- [1] Paraskevis D, Kostaki EG, Magiorkinis G, Panayiotakopoulos G, Sourvinos G, Tsiodras S. Full-genome evolutionary analysis of the novel corona virus (2019-nCoV) rejects the hypothesis of emergence as a result of a recent recombination event. *Infect Genet Evol* 2020;79:104212.
- [2] World Health Organization. Statement on the second meeting of the International Health Regulations (2005) Emergency Committee regarding the outbreak of novel coronavirus (2019-nCoV). (2020-01-30) [2020-02-02]. [https://www.who.int/news-room/detail/30-01-2020-statement-on-the-second-meeting-of-the-international-health-regulations-\(2005\)-emergency-committee-regarding-the-outbreak-of-novel-coronavirus-\(2019-ncov\)](https://www.who.int/news-room/detail/30-01-2020-statement-on-the-second-meeting-of-the-international-health-regulations-(2005)-emergency-committee-regarding-the-outbreak-of-novel-coronavirus-(2019-ncov)).
- [3] Chen Z, Nakamura T. Statistical evidence for the usefulness of Chinese medicine in the treatment of SARS. *Phytother Res* 2004;18(7):592–4.
- [4] Lai L, Han X, Chen H, Wei P, Huang C, Liu S, et al. Quaternary structure, substrate selectivity and inhibitor design for SARS 3C-like proteinase. *Curr Pharm Des* 2006;12(35):4555–64.
- [5] Wang SQ, Du QS, Zhao K, Li AX, Wei DQ, Chou KC. Virtual screening for finding natural inhibitor against cathepsin-L for SARS therapy. *Amino Acids* 2007;33(1):129–35.
- [6] Kesel AJ. Synthesis of novel test compounds for antiviral chemotherapy of severe acute respiratory syndrome (SARS). *Curr Med Chem* 2005;12(18):2095–162.
- [7] Wu CY, Jan JT, Ma SH, Kuo CJ, Juan HF, Cheng YS, et al. Small molecules targeting severe acute respiratory syndrome human coronavirus. *Proc Natl Acad Sci U S A* 2004;101(27):10012–7.
- [8] Liu B, Zhou J. SARS-CoV protease inhibitors design using virtual screening method from natural products libraries. *J Comput Chem* 2005;26(5):484–90.
- [9] Hoever G, Baltina L, Michaelis M, Kondratenko R, Baltina L, Tolstikov GA, et al. Antiviral activity of glycyrrhizic acid derivatives against SARS-coronavirus. *J Med Chem* 2005;48(4):1256–9.
- [10] Li SY, Chen C, Zhang HQ, Guo HY, Wang H, Wang L, et al. Identification of natural compounds with antiviral activities against SARS-associated coronavirus. *Antiviral Res* 2005;67(1):18–23.
- [11] Chen L, Li J, Luo C, Liu H, Xu W, Chen G, et al. Binding interaction of quercetin-3- $\beta$ -galactoside and its synthetic derivatives with SARS-CoV 3CL(pro) structure-activity relationship studies reveal salient pharmacophore features. *Bioorg Med Chem* 2006;14(24):8295–306.
- [12] Park JY, Yuk HJ, Ryu HW, Lim SH, Kim KS, Park KH, et al. Evaluation of polyphenols from *Broussonetia papyrifera* as coronavirus protease inhibitors. *J Enzyme Inhib Med Chem* 2017;32(1):504–15.
- [13] Bhoj VG, Chen ZJ. Ubiquitylation in innate and adaptive immunity. *Nature* 2009;458(7237):430–7.
- [14] Isaacson MK, Ploegh HL. Ubiquitination, ubiquitin-like modifiers, and deubiquitination in viral infection. *Cell Host Microbe* 2009;5(6):559–70.
- [15] Mukherjee P, Shah F, Desai P, Avery M. Inhibitors of SARS-3CLpro: virtual screening, biological evaluation, and molecular dynamics simulation studies. *J Chem Inf Model* 2011;51(6):1376–92.
- [16] Li W, Moore MJ, Vasilieva N, Sui J, Wong SK, Berne MA, et al. Angiotensin-converting enzyme 2 is a functional receptor for the SARS coronavirus. *Nature* 2003;426(6965):450–4.
- [17] Wen CC, Kuo YH, Jan JT, Liang PH, Wang SY, Liu HG, et al. Specific plant terpenoids and lignoids possess potent antiviral activities against severe acute respiratory syndrome coronavirus. *J Med Chem* 2007;50(17):4087–95.
- [18] Ryu YB, Park SJ, Kim YM, Lee JY, Seo WD, Chang JS, et al. SARS-CoV 3CLpro inhibitory effects of quinone-methide triterpenes from *Tripterygium regelii*. *Bioorg Med Chem Lett* 2010;20(6):1873–6.
- [19] Park JY, Kim JH, Kim YM, Jeong HJ, Kim DW, Park KH, et al. Tanshinones as selective and slow-binding inhibitors for SARS-CoV cysteine proteases. *Bioorg Med Chem* 2012;20(19):5928–35.
- [20] Park JY, Kim JH, Kwon JM, Kwon HJ, Jeong HJ, Kim YM, et al. Dieckol, a SARS-CoV 3CL(pro) inhibitor, isolated from the edible brown algae *Ecklonia cava*. *Bioorg Med Chem* 2013;21(13):3730–7.
- [21] Song YH, Kim DW, Curtis-Long MJ, Yuk HJ, Wang Y, Zhuang N, et al. Papain-like protease (PLpro) inhibitory effects of cinnamic amides from *Tribulus terrestris* fruits. *Biol Pharm Bull* 2014;37(6):1021–8.
- [22] Park JY, Ko JA, Kim DW, Kim YM, Kwon HJ, Jeong HJ, et al. Chalcones isolated from *Angelica keiskei* inhibit cysteine proteases of SARS-CoV. *J Enzyme Inhib Med Chem* 2016;31(1):23–30.
- [23] Shen L, Niu J, Wang C, Huang B, Wang W, Zhu N, et al. High-throughput screening and identification of potent broad-spectrum inhibitors of coronaviruses. *J Virol* 2019;93(12):e00023–e119.
- [24] Zhou P, Yang XL, Wang XG, Hu B, Zhang L, Zhang W, et al. A pneumonia outbreak associated with a new coronavirus of probable bat origin. *Nature* 2020 [Epub ahead of print].
- [25] Tian HY. 2019-nCoV: new challenges from coronavirus. *Zhonghua Yu Fang Yi Xue Za Zhi* 2020;54:E001 [Chinese with abstract in English].
- [26] Hu W, Fu W, Wei X, Yang Y, Lu C, Liu Z. A network pharmacology study on the active ingredients and potential targets of *Tripterygium wilfordii* Hook for treatment of rheumatoid arthritis. *Evid Based Complement Alternat Med* 2019;2019:5276865.
- [27] Rizvi SM, Shakil S, Haneef M. A simple click by click protocol to perform docking: AutoDock 4.2 made easy for non-bioinformaticians. *EXCLI J* 2013;12:831–57.
- [28] Kim JY, Kim YI, Park SJ, Kim IK, Choi YK, Kim SH. Safe, high-throughput screening of natural compounds of MERS-CoV entry inhibitors using a pseudovirus expressing MERS-CoV spike protein. *Int J Antimicrob Agents* 2018;52(5):730–2.
- [29] Ratia K, Saikatendu KS, Santarsiero BD, Barretto N, Baker SC, Stevens RC, et al. Severe acute respiratory syndrome coronavirus papain-like protease: structure of a viral deubiquitinating enzyme. *Proc Natl Acad Sci U S A* 2006;103(15):5717–22.
- [30] Anand K, Ziebuhr J, Wadhwani P, Mesters JR, Hilgenfeld R. Coronavirus main proteinase (3CLpro) structure: basis for design of anti-SARS drugs. *Science* 2003;300(5626):1763–7.
- [31] Xu Y, Lou Z, Liu Y, Pang H, Tien P, Gao GF, et al. Crystal structure of severe acute respiratory syndrome coronavirus spike protein fusion core. *J Biol Chem* 2004;279(47):49414–9.
- [32] Zhang W, Huai Y, Miao Z, Qian A, Wang Y. Systems pharmacology for investigation of the mechanisms of action of traditional Chinese medicine in drug discovery. *Front Pharmacol* 2019;10:743.