

PERSPECTIVES

COVID-19 pandemic, coronaviruses, and diabetes mellitus

Ranganath Muniyappa and Sriram Gubbi

Clinical Endocrine Section, Diabetes, Endocrinology, and Obesity Branch, National Institute of Diabetes and Digestive and Kidney Diseases, National Institutes of Health, Bethesda, Maryland

Submitted 31 March 2020; accepted in final form 31 March 2020

Muniyappa R, Gubbi S. COVID-19 pandemic, coronaviruses, and diabetes mellitus. *Am J Physiol Endocrinol Metab* 318: E736–E741, 2020. First published March 31, 2020; doi:10.1152/ajpendo.00124.2020.—The pandemic of coronavirus disease (COVID-19), a disease caused by severe acute respiratory syndrome coronavirus 2 (SARS-CoV-2), is causing substantial morbidity and mortality. Older age and presence of diabetes mellitus, hypertension, and obesity significantly increases the risk for hospitalization and death in COVID-19 patients. In this Perspective, informed by the studies on SARS-CoV-2, Middle East respiratory syndrome (MERS-CoV), and the current literature on SARS-CoV-2, we discuss potential mechanisms by which diabetes modulates the host-viral interactions and host-immune responses. We hope to highlight gaps in knowledge that require further studies pertinent to COVID-19 in patients with diabetes.

diabetes mellitus; coronavirus; COVID-19

INTRODUCTION

Coronaviruses (CoV) are enveloped viruses with a single-stranded, positive-sense RNA genome known to cause respiratory infections in humans (7, 38). In general, in most immunocompetent individuals, human CoV infection leads to mild upper respiratory infection. However, two highly pathogenic CoV have resulted in outbreaks of severe acute respiratory syndrome (SARS) in 2003 in Guangdong province, China and Middle East respiratory syndrome (MERS) in Middle Eastern countries a decade later. SARS-CoV and MERS-CoV were identified to cause SARS and MERS, respectively (11, 51, 55). In December 2019, a novel coronavirus, SARS-CoV-2, was identified as the pathogen causing coronavirus disease (COVID-19) in Wuhan, China (11, 51, 55). On March 11, 2020, COVID-19 was declared a pandemic by the World Health Organization. As of March 27, 2020, there have been a total of 103,942 confirmed cases with 1689 deaths in the United States (19a). Globally, 27,324 deaths have been reported among 595,800 confirmed cases (19a).

Individuals with diabetes mellitus (DM), hypertension, and severe obesity (BMI \geq 40 kg/m²) are more likely to be infected and are at a higher risk for complications and death from COVID-19 (3a, 16, 30, 48, 50, 52, 56). Interestingly, there was a similar increased risk for SARS and MERS in individuals with DM. In the United States, 34.2 million or 10.5% of the total population have DM (3a). Among those aged 65 years or older, a population at higher risk for death from COVID-19, 26.8% have DM (3a). Hypertension and severe obesity are present in 68.4% and 15.5% of individuals diagnosed with

DM, respectively. Over a period of months, a substantial portion of the US population will be infected by SARS-CoV-2 (12). Although a significant number will remain asymptomatic and be able to transmit the virus, the estimated proportion of symptomatic individuals requiring hospitalization increases with age (12). In individuals older than 60 years, that proportion ranges from 17 to 27%. Furthermore, in this older group, the percentage of hospitalized patients requiring care in an intensive care unit (ICU) is 27–71% with an infection fatality rate (IFR) ranging from 2.2 to 9.3% (12). Although these estimates are preliminary and likely to change, considering the prevalence of DM, hypertension, and severe obesity in the United States and the substantial increased risk for COVID-19 and its complications in patients with these conditions, it is likely the pandemic has the potential to cause significant mortality and morbidity. Specialists and health care providers will be providing clinical care to many patients with COVID-19 in inpatient, outpatient, and telehealth settings. Increased awareness of the clinical features, pathophysiology, and potential mechanisms that increase the risk is needed to provide better care and spur new investigations, both basic and clinical, to better understand COVID-19 in patients with diabetes.

Clinical features and natural course of COVID-19. The median age of patients infected with SARS-CoV-2 is in the range of 47–56 years, men comprise more than half of the cases, the average incubation period is 5.2 days, and 98% of those who develop symptoms will do so within 11.5 days (5, 16, 19, 22, 42). The clinical manifestations of COVID-19 vary and include the asymptomatic carrier status, acute respiratory disease (ARD), and pneumonia (16, 42). The prevalence of asymptomatic cases is significant (20–86% of all infections) and are defined as individuals with positive viral nucleic acid tests, but without any COVID-19 symptoms (3, 4, 23, 29, 57). Transmission rates and respiratory viral load in asymptomatic carriers are similar to symptomatic patients (23, 57), partially explaining the rapid spread of SARS-CoV-2. In addition to a laboratory-confirmed COVID-19 diagnosis, patients with ARD manifest with fever, fatigue, respiratory (cough, dyspnea) or gastrointestinal (nausea, diarrhea, vomiting) symptoms, and no significant abnormalities on chest imaging (16, 42). Patients with pneumonia have respiratory symptoms and positive findings in chest imaging. Severe pneumonia can present as acute respiratory distress syndrome (ARDS), leading to severe hypoxia, respiratory failure, multiorgan failure, shock, and death (16, 37, 42).

The pathophysiology of SARS-CoV-2 infection. The genetic sequence of SARS-CoV-2 showed more than 80% shared identity to SARS-CoV and 50% to the MERS-CoV, and both

Correspondence: R. Muniyappa (e-mail: muniyapr@mail.nih.gov).

SARS-CoV and MERS-CoV originate in bats and infect humans and wild animals (1, 7, 26, 38). Cellular CoV entry is a complex process that involves receptor binding and proteolysis leading to virus-cell fusion. CoV is made up of four structural proteins: spike (S), membrane (M), nucleocapsid (N), and envelope (E) proteins. The S protein mediates receptor binding on the host cell membrane through the receptor-binding domain (RBD) in the S1 domain and membrane fusion through the S2 subunit (18, 40). Angiotensin-converting enzyme 2 (ACE2) is the cellular receptor for SARS-CoV and SARS-CoV-2, in contrast to MERS-CoV, which utilizes dipeptidyl peptidase 4 (DPP4) as its cellular receptor (24, 33) (Fig. 1). This interaction thus determines host tropism and ultimately clearance of the virus. ACE2 is expressed in the upper respiratory system, type I and II alveolar epithelial cells in the lungs, the heart, endothelial cells, kidney tubular epithelium, enterocytes, and the pancreas (10, 24, 25, 54). After binding to ACE2, proximal serine proteases such as TMPRSS2 are involved in S protein priming and cleavage of the spike (Fig. 1). Proteases such as Furin subsequently release the spike fusion peptide, and the cellular virus enters through an endosomal pathway (18, 40). The low pH and presence of proteases such as cathepsin-L characteristic of the endosomal microenvironment favor the delivery of SARS-CoV-2 genome into the cytosol where further viral replication leads to the formation of mature virions and subsequent spread.

Infected cells undergo apoptosis or necrosis and trigger inflammatory responses marked by the activation of proinflammatory cytokines or chemokines, which leads to the recruitment of inflammatory cells. CD4⁺ T helper (Th1) cells regulate antigen presentation and immunity against intracellular pathogens such as CoV through interferon gamma (IFN- γ) production. Th17 cells induce the recruitment of neutrophils and macrophages by producing interleukin-17 (IL-17), IL-21, and IL-22 (9). SARS-CoV-2 infects circulating immune cells and increases apoptosis of lymphocytes (CD3, CD4, and CD8 T cells), leading to lymphocytopenia. Indeed, the degree of lymphocytopenia is associated with the severity of SARS-

CoV-2 infection (16, 45, 50, 52). Lower T cell function relieves the inhibition on innate immune system leading to secretion of high amounts of inflammatory cytokines in what is known as a “cytokine storm” (31). In fact, circulating levels of cytokines/chemokines [IL-6, tumor necrosis factor- α (TNF)] and chemokines [CXC-chemokine ligand 10 (CXCL10) and CC-chemokine ligand 2 (CCL2)] involved in the cytokine storm syndrome are elevated and may play a role in SARS-CoV-2-driven hyperinflammation leading to multiorgan failure (15, 28, 41).

Potential mechanisms that increase the risk of COVID-19 in diabetes. It is now well recognized that older age and the presence of DM, hypertension, and severe obesity (BMI \geq 40 kg/m²) increase morbidity and mortality in patients with COVID-19 (3a, 16, 30, 48, 50, 52, 56). Considering the high prevalence of cardiovascular disease (CVD), obesity, and hypertension in patients with DM, it is unknown whether DM independently contributes to this increased risk. However, plasma glucose levels and DM are independent predictors for mortality and morbidity in patients with SARS (49). Potential mechanisms that may increase the susceptibility for COVID-19 in patients with DM include: 1) higher affinity cellular binding and efficient virus entry, 2) decreased viral clearance, 3) diminished T cell function, 4) increased susceptibility to hyperinflammation and cytokine storm syndrome, and 5) presence of CVD (Fig. 2).

Augmented ACE2 expression in alveolar AT2 cells, myocardium, kidney, and pancreas may favor increased cellular binding of SARS-CoV-2 (25, 27, 58). Increased expression of ACE2 has been demonstrated in the lung, kidney, heart, and pancreas in rodent models of DM (35, 46). Insulin administration attenuates ACE2 expression (35, 46), while hypoglycemic agents such as glucagon-like peptide-1 (GLP-1) agonists (liraglutide) and thiazolidinediones (TZDs; pioglitazone), antihypertensives such as ACE inhibitors, and statins upregulate ACE2 (14, 36, 39, 44, 53). Until recently, whether DM was causally linked to ACE2 expression levels in the lung in humans was unknown. Using a phenome-wide Mendelian

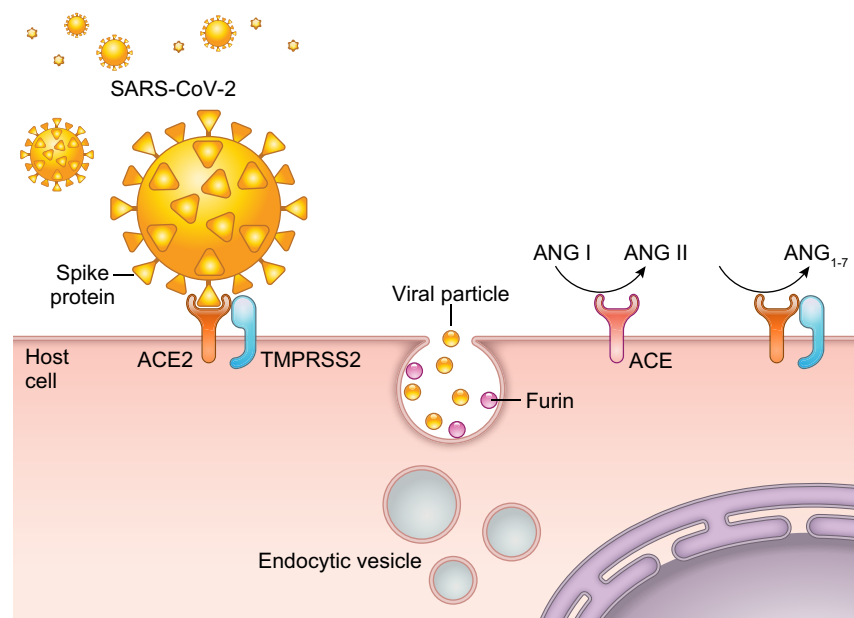


Fig. 1. Cellular entry of severe acute respiratory syndrome coronavirus 2 (SARS-CoV-2). The initial step in cellular entry of the virus is the binding of SARS-CoV-2 spike protein to cell surface angiotensin converting enzyme 2 (ACE2). Cellular proteases such as TMPRSS2 and furin are involved in priming of the S protein, which involves cleavage at the S1/S2 domains. This allows the fusion of the virus to the cell surface. Virions are taken up into endosomes, where SARS-CoV-2-S is cleaved and possibly activated by the pH-dependent cysteine protease cathepsin L. Once inside the cell, SARS-CoV-2 uses the endogenous cellular machinery to replicate itself. ACE catalyzes the conversion of angiotensin (Ang I) to the octapeptide AngII, whereas ACE2 converts AngII to Ang₁₋₇. AngII through the activation of Ang II type 1a receptors induces vasoconstriction and proliferation, whereas Ang₁₋₇ stimulates vasodilatation and suppresses cell growth.

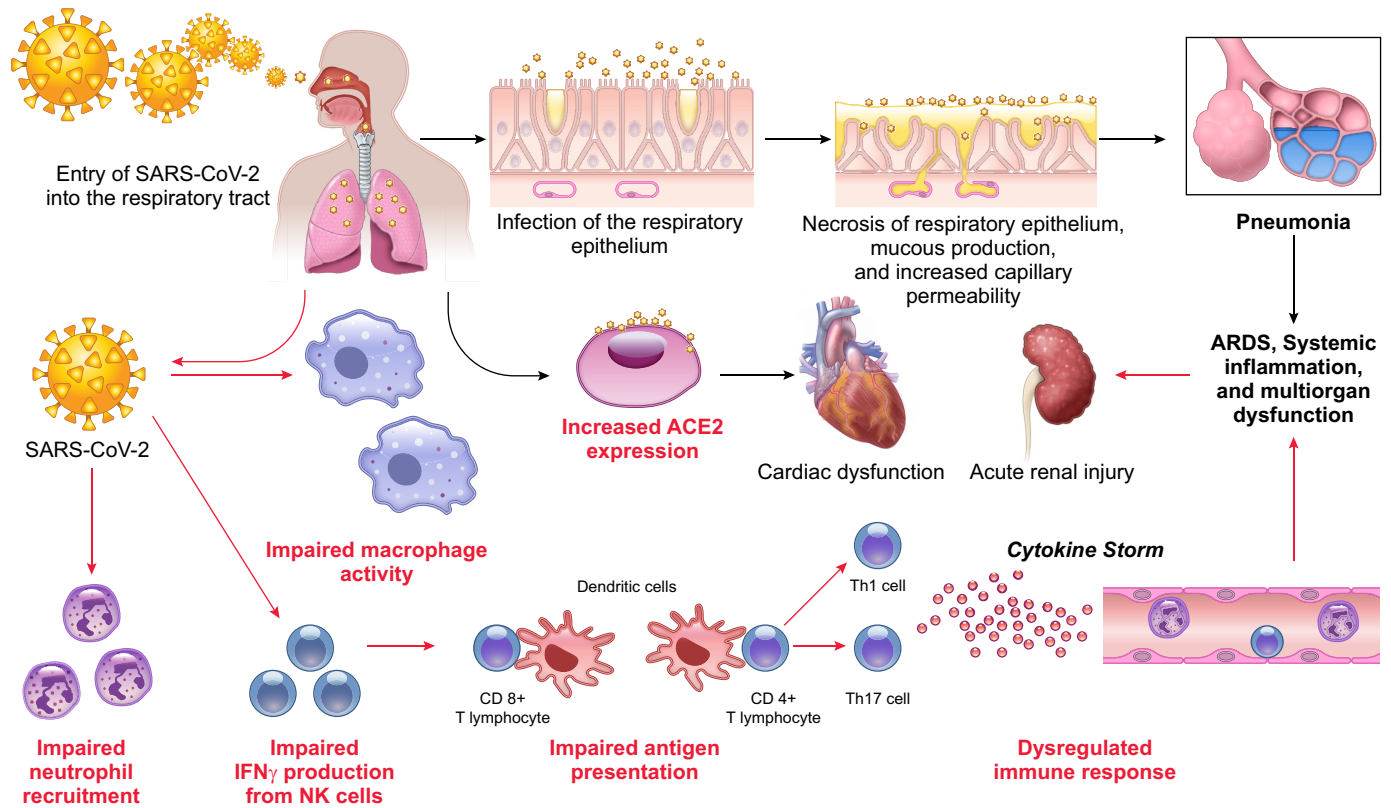


Fig. 2. Putative mechanisms contributing to increased susceptibility for coronavirus disease (COVID-19) in patients with diabetes mellitus (DM). Following aerosolized uptake of severe acute respiratory syndrome coronavirus 2 (SARS-CoV-2), invasion of the respiratory epithelium and other target cells by SARS-CoV-2 involves binding to cell surface angiotensin converting enzyme 2 (ACE2). Increased expression of ACE2 may favor more efficient cell binding and entry into cells. Early recruitment and function of neutrophils and macrophages are impaired in DM. Delay in the initiation of adaptive immunity and dysregulation of the cytokine response in DM may lead to the initiation of cytokine storm.

randomization study, Rao et al. (34) explored diseases or traits that may be causally linked to increased ACE2 expression in the lung. Interestingly, they found that DM was causally associated with increased lung ACE2 expression. Circulating levels of furin, a cellular protease involved in facilitating viral entry by cleaving the S1 and S2 domain of the spike protein, are elevated in patients with DM (13). These studies support the hypothesis that patients with DM are susceptible to SARS-CoV-2 infection. Indeed, a recent study reported that clearance of SARS-CoV-2 was delayed in patients with DM, a finding that needs to be confirmed in larger studies (6) (Fig. 2).

ACE catalyzes the conversion of the prohormone, angiotensin (Ang) I to the octapeptide, AngII, whereas ACE2 converts AngII to Ang₁₋₇. AngII, through the activation of Ang II type 1a receptors induces vasoconstriction and proliferation, whereas Ang₁₋₇ stimulates vasodilatation and suppresses cell growth (Fig. 1). Increased ratio of pulmonary ACE/ACE2 activity as observed in patients with ARDS (43) favors AngII generation. Once bound to ACE2, SARS-CoV downregulates cellular expression of ACE2, and the unopposed action of AngII contributes to acute lung injury (20). Binding to ACE2 alone does not lead to severe lung injury as is observed with other CoVs (NL63) (7, 38). Whether SARS-CoV-2 causes downregulation of pulmonary ACE2 is unknown. Nevertheless, there exists a potential for salutary, if not therapeutic, effects of Ang II receptor block-

ers, ACE inhibitors, TZDs, GLP-1 agonists, and statins in the setting of low ACE2 expression. Lacking further evidence of risk or benefit, the American College of Cardiology, the American Heart Association, and the American Society of Hypertension have recommended that patients should continue treatment with their usual antihypertensive therapy (8).

DM inhibits neutrophil chemotaxis, phagocytosis, and intracellular killing of microbes. Impairments in adaptive immunity characterized by an initial delay in the activation of Th1 cell-mediated immunity and a late hyperinflammatory response is often observed in patients with diabetes (17). In an elegant study, Kulcsar et al. (21) examined the effects of DM in a humanized mouse model of MERS-CoV infection on a high-fat diet. Following MERS-CoV infection, the disease was more severe and prolonged in diabetic male mice and was characterized by alterations in CD4+ T cell counts and abnormal cytokine responses (such as elevated IL17a). Consistent with this finding, in patients with COVID-19, peripheral counts of CD4+ and CD8+ T cells are low, but with a higher proportion of highly proinflammatory Th17 CD4+ T cells, as well as elevated cytokine levels (16, 45, 47, 50, 52). Thus, it is likely that patients with DM may have blunted anti-viral IFN responses, and the delayed activation of Th1/Th17 may contribute to accentuated inflammatory responses (Fig. 2).

Conclusion

There is a paucity of data in the United States regarding comorbidities and COVID-19 outcomes and mechanisms that modulate viral pathogenesis. Certain racial groups such as African Americans, Hispanics, Asians, and Native Americans are highly prone to develop DM, and disparities in health care make these groups more vulnerable. Identification of clinical and biochemical parameters using multi-omics approaches that predict severity of the COVID-19 in DM using large data sets is urgently needed. Studies in humanized ACE2 (hACE2) mice and non-human primates aimed at understanding how hyperglycemia, hyperinsulinemia, and hypoglycemic agents affect pathogenesis of COVID-19 and how DM affects the efficacy of vaccines and antiviral investigational agents currently in trials are warranted. Finally, we need to develop novel ways to deliver care to our patients with DM using telehealth, remote patient monitoring, and wearable technologies. As the global pandemic unfolds and rapidly spreads across the United States, social isolation measures will enable the transition, but there is an urgent need for basic and clinical investigations to address the many important and unanswered questions.

ACKNOWLEDGMENTS

The authors acknowledge and thank the health care providers taking care of patients with COVID-19.

GRANTS

This work was supported in part by the Intramural Research Program of the National Institute of Diabetes and Digestive and Kidney Diseases (NIDDK), Bethesda, MD.

DISCLOSURES

No conflicts of interest, financial or otherwise, are declared by the authors.

AUTHOR CONTRIBUTIONS

R.M. and S.G. prepared figures; R.M. and S.G. drafted manuscript; R.M. and S.G. edited and revised manuscript; R.M. and S.G. approved final version of manuscript.

REFERENCES

- Andersen KG, Rambaut A, Lipkin WI, Holmes EC, Garry RF. The proximal origin of SARS-CoV-2. *Nat Med*. doi:10.1038/s41591-020-0820-9.
- Bai Y, Yao L, Wei T, Tian F, Jin DY, Chen L, Wang M. Presumed asymptomatic carrier transmission of COVID-19. *JAMA*. In press. doi:10.1001/jama.2020.2565.
- Centers for Disease Control and Prevention. *National Diabetes Statistics Report, 2020*. Atlanta, GA: Centers for Disease Control and Prevention, US Department of Health and Human Services, 2020.
- Chang D, Xu H, Rebaza A, Sharma L, Dela Cruz CS. Protecting health-care workers from subclinical coronavirus infection. *Lancet Respir Med* 8: e13, 2020. doi:10.1016/S2213-2600(20)30066-7.
- Chen N, Zhou M, Dong X, Qu J, Gong F, Han Y, Qiu Y, Wang J, Liu Y, Wei Y, Xia J, Yu T, Zhang X, Zhang L. Epidemiological and clinical characteristics of 99 cases of 2019 novel coronavirus pneumonia in Wuhan, China: a descriptive study. *Lancet* 395: 507–513, 2020. doi:10.1016/S0140-6736(20)30211-7.
- Chen X, Hu W, Ling J, Mo P, Zhang Y, Jiang Q, Ma Z, Cao Q, Deng L, Song S, Zheng R, Gao S, Ke H, Gui X, Lundkvist Å, Li J, Lindahl JF, Xiong Y. Hypertension and diabetes delay the viral clearance in COVID-19 patients (Preprint). *medRxiv*: 2020.2003.2022.20040774, 2020. doi:10.1101/2020.03.22.20040774.
- Cui J, Li F, Shi ZL. Origin and evolution of pathogenic coronaviruses. *Nat Rev Microbiol* 17: 181–192, 2019. doi:10.1038/s41579-018-0118-9.
- Danser AHJ, Epstein M, Battie D. Renin-angiotensin system blockers and the COVID-19 pandemic: at present there is no evidence to abandon renin-angiotensin system blockers. *Hypertension* 120: A12015082, 2020. doi:10.1161/HYPERTENSIONAHA.120.15082.
- de Wit E, van Doremalen N, Falzarano D, Munster VJ. SARS and MERS: recent insights into emerging coronaviruses. *Nat Rev Microbiol* 14: 523–534, 2016. doi:10.1038/nrmicro.2016.81.
- Diao B, Wang C, Wang R, Feng Z, Tan Y, Wang H, Wang C, Liu L, Liu Y, Liu Y, Wang G, Yuan Z, Ren L, Wu Y, Chen Y. Human kidney is a target for novel severe acute respiratory syndrome coronavirus 2 (SARS-CoV-2) infection (Preprint). *medRxiv*: 2020.2003.2004.20031120, 2020. doi:10.1101/2020.03.04.20031120.
- Drosten C, Günther S, Preiser W, van der Werf S, Brodt HR, Becker S, Rabenau H, Panning M, Kolesnikova L, Fouchier RA, Berger A, Burguière AM, Cinatl J, Eickmann M, Escriou N, Grywna K, Kramme S, Manuguerra JC, Müller S, Rickerts V, Stürmer M, Vieth S, Klenk HD, Osterhaus AD, Schmitz H, Doerr HW. Identification of a novel coronavirus in patients with severe acute respiratory syndrome. *N Engl J Med* 348: 1967–1976, 2003. doi:10.1056/NEJMoa030747.
- Ferguson N, Laydon D, Nedjati Gilani G, Imai N, Ainslie K, Baguelin M, Bhatia S, Boonyasiri A, Cucunuba Perez Z, Cuomo-Dannenburg G, Dighe A, Dorigatti I, Fu H, Gaythorpe K, Green W, Hamlet A, Hinsley W, Okell L, Van Elsland S, Thompson H, Verity R, Volz E, Wang H, Wang Y, Walker P, Walters C, Winskill P, Whittaker C, Donnelly C, Riley S, Ghani A; Imperial College of London COVID-19 Response Team. Impact of non-pharmaceutical interventions (NPIs) to reduce COVID-19 mortality and healthcare demand. doi:10.25561/77482.
- Fernandez C, Rysä J, Almgren P, Nilsson J, Engström G, Orholm-Melander M, Ruskoaho H, Melander O. Plasma levels of the proprotein convertase furin and incidence of diabetes and mortality. *J Intern Med* 284: 377–387, 2018. doi:10.1111/joim.12783.
- Ferrario CM, Jessup J, Chappell MC, Averill DB, Brosnihan KB, Tallant EA, Diz DI, Gallagher PE. Effect of angiotensin-converting enzyme inhibition and angiotensin II receptor blockers on cardiac angiotensin-converting enzyme 2. *Circulation* 111: 2605–2610, 2005. doi:10.1161/CIRCULATIONAHA.104.510461.
- Gao Y, Li T, Han M, Li X, Wu D, Xu Y, Zhu Y, Liu Y, Wang X, Wang L. Diagnostic utility of clinical laboratory data determinations for patients with the severe COVID-19. *J Med Virol* (In press). doi:10.1002/jmv.25770.
- Guan WJ, Ni ZY, Hu Y, Liang WH, Ou CQ, He JX, Liu L, Shan H, Lei CL, Hui DSC, Du B, Li LJ, Zeng G, Yuen KY, Chen RC, Tang CL, Wang T, Chen PY, Xiang J, Li SY, Wang JL, Liang JZ, Peng YX, Wei L, Liu Y, Hu YH, Peng P, Wang JM, Liu JY, Chen Z, Li G, Zheng ZJ, Qiu SQ, Luo J, Ye CJ, Zhu SY, Zhong NS, China Medical Treatment Expert Group for Covid-19. Clinical characteristics of coronavirus disease 2019 in China. *N Engl J Med* (In press). doi:10.1056/NEJMoa2002032.
- Hodgson K, Morris J, Bridson T, Govan B, Rush C, Ketheesan N. Immunological mechanisms contributing to the double burden of diabetes and intracellular bacterial infections. *Immunology* 144: 171–185, 2015. doi:10.1111/imm.12394.
- Hoffmann M, Kleine-Weber H, Schroeder S, Krüger N, Herrler T, Erichsen S, Schiergens TS, Herrler G, Wu NH, Nitsche A, Müller MA, Drosten C, Pöhlmann S. SARS-CoV-2 cell entry depends on ACE2 and TMPRSS2 and is blocked by a clinically proven protease inhibitor. *Cell* (In press). doi:10.1016/j.cell.2020.02.052.
- Huang C, Wang Y, Li X, Ren L, Zhao J, Hu Y, Zhang L, Fan G, Xu J, Gu X, Cheng Z, Yu T, Xia J, Wei Y, Wu W, Xie X, Yin W, Li H, Liu M, Xiao Y, Gao H, Guo L, Xie J, Wang G, Jiang R, Gao Z, Jin Q, Wang J, Cao B. Clinical features of patients infected with 2019 novel coronavirus in Wuhan, China. *Lancet* 395: 497–506, 2020. doi:10.1016/S0140-6736(20)30183-5.
- Johns Hopkins Coronavirus Resource Center. Coronavirus COVID-19 Global Cases by the Center for Systems Science and Engineering (CSSE). <https://coronavirus.jhu.edu/map.html>.
- Kuba K, Imai Y, Rao S, Gao H, Guo F, Guan B, Huan Y, Yang P, Zhang Y, Deng W, Bao L, Zhang B, Liu G, Wang Z, Chappell M, Liu Y, Zheng D, Leibbrandt A, Wada T, Slutsky AS, Liu D, Qin C, Jiang C, Peñning JM. A crucial role of angiotensin converting enzyme 2 (ACE2) in SARS coronavirus-induced lung injury. *Nat Med* 11: 875–879, 2005. doi:10.1038/nm1267.
- Kulcsar KA, Coleman CM, Beck SE, Frieman MB. Comorbid diabetes results in immune dysregulation and enhanced disease severity following MERS-CoV infection. *JCI Insight* 4: 4, 2019. doi:10.1172/jci.insight.131774.

22. Lauer SA, Grantz KH, Bi Q, Jones FK, Zheng Q, Meredith HR, Azman AS, Reich NG, Lessler J. The Incubation Period of Coronavirus Disease 2019 (COVID-19) From Publicly Reported Confirmed Cases: Estimation and Application. *Ann Intern Med* (In press). doi:10.7326/M20-0504.
23. Li R, Pei S, Chen B, Song Y, Zhang T, Yang W, Shaman J. Substantial undocumented infection facilitates the rapid dissemination of novel coronavirus (SARS-CoV2). *Science* (In press). doi:10.1126/science.abb3221.
24. Li W, Moore MJ, Vasilieva N, Sui J, Wong SK, Berne MA, Somasundaran M, Sullivan JL, Luzuriaga K, Greenough TC, Choe H, Farzan M. Angiotensin-converting enzyme 2 is a functional receptor for the SARS coronavirus. *Nature* 426: 450–454, 2003. doi:10.1038/nature02145.
25. Liu F, Long X, Zou W, Fang M, Wu W, Li W, Zhang B, Zhang W, Chen X, Zhang Z. Highly ACE2 expression in pancreas may cause pancreas damage after SARS-CoV-2 infection (Preprint). *medRxiv*: 2020.2002.2028.20029181, 2020. doi:10.1101/2020.02.28.20029181.
26. Lu R, Zhao X, Li J, Niu P, Yang B, Wu H, Wang W, Song H, Huang B, Zhu N, Bi Y, Ma X, Zhan F, Wang L, Hu T, Zhou H, Hu Z, Zhou W, Zhao L, Chen J, Meng Y, Wang J, Lin Y, Yuan J, Xie Z, Ma J, Liu WJ, Wang D, Xu W, Holmes EC, Gao GF, Wu G, Chen W, Shi W, Tan W. Genomic characterisation and epidemiology of 2019 novel coronavirus: implications for virus origins and receptor binding. *Lancet* 395: 565–574, 2020. doi:10.1016/S0140-6736(20)30251-8.
27. Lukassen S, Chua RL, Trefzer T, Kahn NC, Schneider MA, Muley T, Winter H, Meister M, Veith C, Boots AW, Hennig BP, Kreuter M, Conrad C, Eils R. SARS-CoV-2 receptor ACE2 and TMPRSS2 are predominantly expressed in a transient secretory cell type in subsegmental bronchial branches (Preprint). *bioRxiv*:2020.2003.2013.991455, 2020. doi:10.1101/2020.03.13.991455.
28. Mehta P, McAuley DF, Brown M, Sanchez E, Tattersall RS, Manson JJ; HLH Across Speciality Collaboration, UK. COVID-19: consider cytokine storm syndromes and immunosuppression. *Lancet* 395: 1033–1034, 2020. doi:10.1016/S0140-6736(20)30628-0.
29. Mizumoto K, Kagaya K, Zarebski A, Chowell G. Estimating the asymptomatic proportion of coronavirus disease 2019 (COVID-19) cases on board the Diamond Princess cruise ship, Yokohama, Japan, 2020. *Euro Surveill* 25: 25, 2020. doi:10.2807/1560-7917.ES.2020.25.10.20000180.
30. Onder G, Rezza G, Brusaferro S. Case-fatality rate and characteristics of patients dying in relation to COVID-19 in Italy. *JAMA* (In press). doi:10.1001/jama.2020.4683.
31. Palm NW, Medzhitov R. Not so fast: adaptive suppression of innate immunity. *Nat Med* 13: 1142–1144, 2007. doi:10.1038/nm1007-1142b.
32. Raj VS, Mou H, Smits SL, Dekkers DH, Müller MA, Dijkman R, Muth D, Demmers JA, Zaki A, Fouchier RA, Thiel V, Drosten C, Rottier PJ, Osterhaus AD, Bosch BJ, Haagmans BL. Dipeptidyl peptidase 4 is a functional receptor for the emerging human coronavirus-EMC. *Nature* 495: 251–254, 2013. doi:10.1038/nature12005.
33. Rao S, Lau A, So H-C. Exploring diseases/traits and blood proteins causally related to expression of ACE2, the putative receptor of 2019-nCoV: A Mendelian randomization analysis (Preprint). *medRxiv*: 2020.2003.2004.20031237, 2020. doi:10.1101/2020.03.04.20031237.
34. Roca-Ho H, Riera M, Palau V, Pascual J, Soler MJ. Characterization of ACE and ACE2 Expression within Different Organs of the NOD Mouse. *Int J Mol Sci* 18: 563, 2017. doi:10.3390/ijms18030563.
35. Román-Pérez M, Outeiriño-Iglesias V, Moya CM, Santisteban P, González-Matías LC, Vigo E, Mallo F. Activation of the GLP-1 receptor by liraglutide increases ACE2 expression, reversing right ventricle hypertrophy, and improving the production of SP-A and SP-B in the lungs of Type 1 diabetes rats. *Endocrinology* 156: 3559–3569, 2015. doi:10.1210/en.2014-1685.
36. Salehi S, Abedi A, Balakrishnan S, Gholamrezaezhad A. Coronavirus disease 2019 (COVID-19): a systematic review of imaging findings in 919 patients. *Am J Roentgenol* (In press). doi:10.2214/AJR.20.23034.
37. Su S, Wong G, Shi W, Liu J, Lai ACK, Zhou J, Liu W, Bi Y, Gao GF. Epidemiology, Genetic Recombination, and Pathogenesis of Coronaviruses. *Trends Microbiol* 24: 490–502, 2016. doi:10.1016/j.tim.2016.03.003.
38. Tikoo K, Patel G, Kumar S, Karpe PA, Sanghavi M, Malek V, Srinivasan K. Tissue specific up regulation of ACE2 in rabbit model of atherosclerosis by atorvastatin: role of epigenetic histone modifications. *Biochem Pharmacol* 93: 343–351, 2015. doi:10.1016/j.bcp.2014.11.013.
39. Walls AC, Park YJ, Tortorici MA, Wall A, McGuire AT, Veesler D. Structure, function, and antigenicity of the SARS-CoV-2 spike glycoprotein. *Cell* (In press). doi:10.1016/j.cell.2020.02.058.
40. Wan S, Yi Q, Fan S, Lv J, Zhang X, Guo L, Lang C, Xiao Q, Xiao K, Yi Z, Qiang M, Xiang J, Zhang B, and Chen Y. Characteristics of lymphocyte subsets and cytokines in peripheral blood of 123 hospitalized patients with 2019 novel coronavirus pneumonia (NCP) (Preprint). *medRxiv*: 2020.2002.2010.20021832, 2020. doi:10.1101/2020.02.10.20021832.
41. Wang D, Hu B, Hu C, Zhu F, Liu X, Zhang J, Wang B, Xiang H, Cheng Z, Xiong Y, Zhao Y, Li Y, Wang X, Peng Z. Clinical characteristics of 138 hospitalized patients with 2019 novel coronavirus-infected pneumonia in Wuhan, China. *JAMA* 323: 1061, 2020. doi:10.1001/jama.2020.1585.
42. Wösten-van Asperen RM, Bos AP, Bem RA, Dierdorp BS, Dekker T, van Goor H, Kamilic J, van der Loos CM, van den Berg E, Bruijn M, van Woensel JB, Lutter R. Imbalance between pulmonary angiotensin-converting enzyme and angiotensin-converting enzyme 2 activity in acute respiratory distress syndrome. *Pediatr Crit Care Med* 14: e438–e441, 2013. doi:10.1097/PCC.0b013e3182a55735.
43. Wösten-van Asperen RM, Lutter R, Specht PA, Moll GN, van Woensel JB, van der Loos CM, van Goor H, Kamilic J, Florquin S, Bos AP. Acute respiratory distress syndrome leads to reduced ratio of ACE/ACE2 activities and is prevented by angiotensin-(1-7) or an angiotensin II receptor antagonist. *J Pathol* 225: 618–627, 2011. doi:10.1002/path.2987.
44. Wu C, Chen X, Cai Y, Xia J, Zhou X, Xu S, Huang H, Zhang L, Zhou X, Du C, Zhang Y, Song J, Wang S, Chao Y, Yang Z, Xu J, Zhou X, Chen D, Xiong W, Xu L, Zhou F, Jiang J, Bai C, Zheng J, Song Y. Risk factors associated with acute respiratory distress syndrome and death in patients with coronavirus disease 2019 pneumonia in Wuhan, China. *JAMA Intern Med* (In press). doi:10.1001/jamainternmed.2020.0994.
45. Wysocki J, Ye M, Soler MJ, Gurley SB, Xiao HD, Bernstein KE, Coffman TM, Chen S, Batlle D. ACE and ACE2 activity in diabetic mice. *Diabetes* 55: 2132–2139, 2006. doi:10.2337/db06-0033.
46. Xu Z, Shi L, Wang Y, Zhang J, Huang L, Zhang C, Liu S, Zhao P, Liu H, Zhu L, Tai Y, Bai C, Gao T, Song J, Xia P, Dong J, Zhao J, Wang FS. Pathological findings of COVID-19 associated with acute respiratory distress syndrome. *Lancet Respir Med* 8: 420–422, 2020. doi:10.1016/S2213-2600(20)30076-X.
47. Yang J, Zheng Y, Gou X, Pu K, Chen Z, Guo Q, Ji R, Wang H, Wang Y, Zhou Y. Prevalence of comorbidities in the novel Wuhan coronavirus (COVID-19) infection: a systematic review and meta-analysis. *Int J Infect Dis* S1201-9712(20)30136-3, 2020. doi:10.1016/j.ijid.2020.03.017.
48. Yang JK, Feng Y, Yuan MY, Yuan SY, Fu HJ, Wu BY, Sun GZ, Yang GR, Zhang XL, Wang L, Xu X, Xu XP, Chan JC. Plasma glucose levels and diabetes are independent predictors for mortality and morbidity in patients with SARS. *Diabet Med* 23: 623–628, 2006. doi:10.1111/j.1464-5491.2006.01861.x.
49. Yang X, Yu Y, Xu J, Shu H, Xia J, Liu H, Wu Y, Zhang L, Yu Z, Fang M, Yu T, Wang Y, Pan S, Zou X, Yuan S, Shang Y. Clinical course and outcomes of critically ill patients with SARS-CoV-2 pneumonia in Wuhan, China: a single-centered, retrospective, observational study. *Lancet Respir Med* (In press). doi:10.1016/S2213-2600(20)30079-5.
50. Zaki AM, van Boheemen S, Bestebroer TM, Osterhaus AD, Fouchier RA. Isolation of a novel coronavirus from a man with pneumonia in Saudi Arabia. *N Engl J Med* 367: 1814–1820, 2012. doi:10.1056/NEJMoa1211721.
51. Zhang JJ, Dong X, Cao YY, Yuan YD, Yang YB, Yan YQ, Akdis CA, Gao YD. Clinical characteristics of 140 patients infected with SARS-CoV-2 in Wuhan, China. *Allergy* (In press). doi:10.1111/all.14238.
52. Zhang W, Xu YZ, Liu B, Wu R, Yang YY, Xiao XQ, Zhang X. Pioglitazone upregulates angiotensin converting enzyme 2 expression in insulin-sensitive tissues in rats with high-fat diet-induced nonalcoholic steatohepatitis. *ScientificWorldJournal* 2014: 603409, 2014. doi:10.1155/2014/603409.
53. Zheng Y-Y, Ma Y-T, Zhang J-Y, Xie X. COVID-19 and the cardiovascular system. *Nat Rev Cardiol*, 2020. doi:10.1038/s41569-020-0360-5.
54. Zhong NS, Zheng BJ, Li YM, Poon LLM, Xie ZH, Chan KH, Li PH, Tan SY, Chang Q, Xie JP, Liu XQ, Xu J, Li DX, Yuan KY, Peiris JSM, Guan Y. Epidemiology and cause of severe acute respiratory syndrome (SARS) in Guangdong, People's Republic of China, in February, 2003. *Lancet* 362: 1353–1358, 2003. doi:10.1016/S0140-6736(03)14630-2.

56. Zhou F, Yu T, Du R, Fan G, Liu Y, Liu Z, Xiang J, Wang Y, Song B, Gu X, Guan L, Wei Y, Li H, Wu X, Xu J, Tu S, Zhang Y, Chen H, Cao B. Clinical course and risk factors for mortality of adult inpatients with COVID-19 in Wuhan, China: a retrospective cohort study. *Lancet* 395: 1054–1062, 2020. doi:[10.1016/S0140-6736\(20\)30566-3](https://doi.org/10.1016/S0140-6736(20)30566-3).
57. Zou L, Ruan F, Huang M, Liang L, Huang H, Hong Z, Yu J, Kang M, Song Y, Xia J, Guo Q, Song T, He J, Yen HL, Peiris M, Wu J. SARS-CoV-2 viral load in upper respiratory specimens of infected patients. *N Engl J Med* 382: 1177–1179, 2020. doi:[10.1056/NEJMc2001737](https://doi.org/10.1056/NEJMc2001737).
58. Zou X, Chen K, Zou J, Han P, Hao J, Han Z. Single-cell RNA-seq data analysis on the receptor ACE2 expression reveals the potential risk of different human organs vulnerable to 2019-nCoV infection. *Front Med* (In press). doi:[10.1007/s11684-020-0754-0](https://doi.org/10.1007/s11684-020-0754-0).

