

An interactive web-based dashboard to track COVID-19 in real time

In December, 2019, a local outbreak of pneumonia of initially unknown cause was detected in Wuhan (Hubei, China), and was quickly determined to be caused by a novel coronavirus,¹ namely severe acute respiratory syndrome coronavirus 2 (SARS-CoV-2). The outbreak has since spread to every province of mainland China as well as 27 other countries and regions, with more than 70 000 confirmed cases as of Feb 17, 2020.² In response to this ongoing public health emergency, we developed an online interactive dashboard, hosted by the Center for Systems Science and Engineering (CSSE) at Johns Hopkins University, Baltimore, MD, USA, to visualise and track reported cases of coronavirus disease 2019 (COVID-19) in real time. The dashboard, first shared publicly on Jan 22, illustrates the location and number of confirmed COVID-19 cases, deaths, and recoveries for all affected countries. It was developed to provide researchers, public health authorities, and the general public with a user-friendly tool to track the outbreak as it unfolds. All data collected and displayed are made freely available, initially through Google Sheets and now through a GitHub repository, along with the feature layers of the dashboard, which are now included in the Esri Living Atlas.

The dashboard reports cases at the province level in China; at the city level in the USA, Australia, and Canada; and at the country level otherwise. During Jan 22–31, all data collection and processing were done manually, and updates were typically done twice a day, morning and night (US Eastern Time). As the outbreak evolved, the manual reporting process became unsustainable; therefore, on Feb 1, we adopted a semi-automated living data stream strategy. Our primary data source is DXY, an online platform run

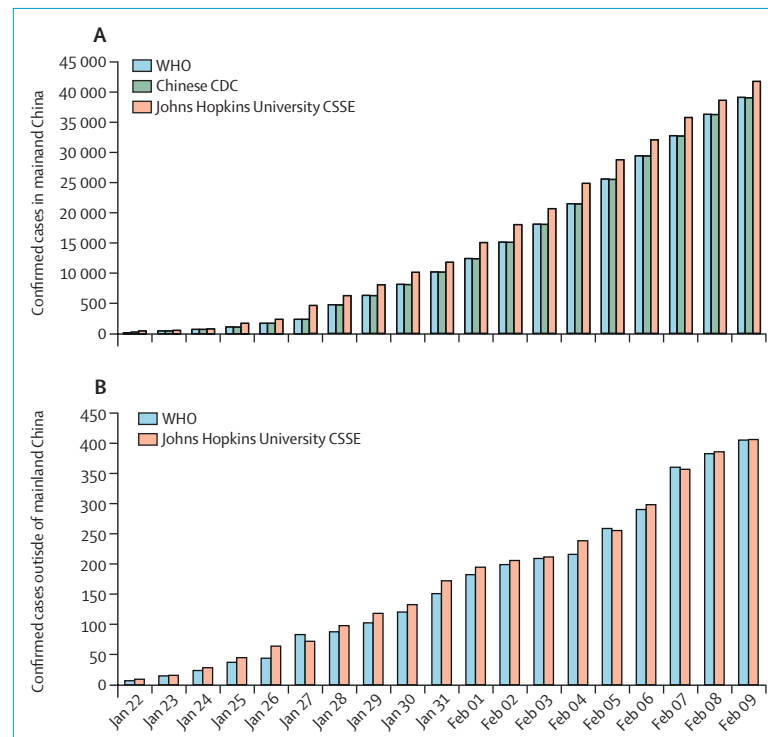


Figure 2: Comparison of COVID-19 case reporting from different sources

Daily cumulative case numbers (starting Jan 22, 2020) reported by the Johns Hopkins University Center for Systems Science and Engineering (CSSE), WHO situation reports, and the Chinese Center for Disease Control and Prevention (Chinese CDC) for within (A) and outside (B) mainland China.

by members of the Chinese medical community, which aggregates local media and government reports to provide cumulative totals of COVID-19 cases in near real time at the province level in China and at the country level otherwise. Every 15 min, the cumulative case counts are updated from DXY for all provinces in China and for other affected countries and regions. For countries and regions outside mainland China (including Hong Kong, Macau, and Taiwan), we found DXY cumulative case counts to frequently lag behind other sources; we therefore manually update these case numbers throughout the day when new cases are identified. To identify new cases, we monitor various Twitter feeds, online news services, and direct communication sent through the dashboard. Before manually updating the dashboard, we confirm the case numbers with regional and local health departments,

including the respective centres for disease control and prevention (CDC) of China, Taiwan, and Europe, the Hong Kong Department of Health, the Macau Government, and WHO, as well as city-level and state-level health authorities. For city-level case reports in the USA, Australia, and Canada, which we began reporting on Feb 1, we rely on the US CDC, the government of Canada, the Australian Government Department of Health, and various state or territory health authorities. All manual updates (for countries and regions outside mainland China) are coordinated by a team at Johns Hopkins University.

The case data reported on the dashboard aligns with the daily Chinese CDC³ and WHO situation reports² for within and outside of mainland China, respectively (figure). Furthermore, the dashboard is particularly effective at capturing the timing of the first reported case of COVID-19 in new



Lancet Infect Dis 2020

Published Online
February 19, 2020
[https://doi.org/10.1016/S1473-3099\(20\)30120-1](https://doi.org/10.1016/S1473-3099(20)30120-1)

For the interactive dashboard of global COVID-19 cases see <https://arcg.is/OfHmTX>

For the COVID-19 data repository at GitHub see <https://github.com/CSSEGISandData/COVID-19>

For coronavirus data at DXY see <https://ncov.dxy.cn/ncovh5/view/pneumonia>

See Online for appendix

countries or regions (appendix). With the exception of Australia, Hong Kong, and Italy, the CSSE at Johns Hopkins University has reported newly infected countries ahead of WHO, with Hong Kong and Italy reported within hours of the corresponding WHO situation report.

Given the popularity and impact of the dashboard to date, we plan to continue hosting and managing the tool throughout the entirety of the COVID-19 outbreak and to build out its capabilities to establish a standing tool to monitor and

report on future outbreaks. We believe our efforts are crucial to help inform modelling efforts and control measures during the earliest stages of the outbreak.

We declare no competing interests.

We are grateful for the technical support from the Esri Living Atlas team and the Johns Hopkins University Applied Physics Lab.

Ensheng Dong, Hongru Du,
**Lauren Gardner*
I.gardner@jhu.edu

Department of Civil and Systems Engineering,
Johns Hopkins University, Baltimore, MD 21218,
USA (ED, HD, LG)

- 1 WHO. WHO statement regarding cluster of pneumonia cases in Wuhan, China. Jan 9, 2020. <https://www.who.int/china/news/detail/09-01-2020-who-statement-regarding-cluster-of-pneumonia-cases-in-wuhan-china> (accessed Feb 11, 2020).
- 2 WHO. Coronavirus disease 2019 (COVID-19) situation reports. <https://www.who.int/emergencies/diseases/novel-coronavirus-2019/situation-reports> (accessed Feb 17, 2020).
- 3 Chinese Center for Disease Control and Prevention. Tracking the epidemic. <http://weekly.chinacdc.cn/news/TrackingtheEpidemic.htm> (accessed Feb 11, 2020).