

A Gaussian model for the time development of the Sars-Cov-2 corona pandemic disease. Predictions for Germany made on March 30, 2020

R. Schlickeiser^{1,2}, F. Schlickeiser^{3*}

*1 Institut für Theoretische Physik,
Lehrstuhl IV: Weltraum- und Astrophysik,
Ruhr-Universität Bochum, D-44780 Bochum,
Germany, ORCID 0000-0003-3171-5079*

*2 Institut für Theoretische Physik und Astrophysik,
Christian-Albrechts-Universität zu Kiel,
Leibnizstr. 15, D-24118 Kiel, Germany*

3 10555 Berlin, Germany

(Dated: March 31, 2020)

For Germany it is predicted that the first wave of the corona pandemic disease reaches its maximum of new infections on April 11th, 2020 $\pm_{-3.4}^{+5.4}$ days with 90 percent confidence. With a delay of about 7 days the maximum demand on breathing machines in hospitals occurs on April 18th, 2020 $\pm_{-3.4}^{+5.4}$ days. The first pandemic wave ends in Germany end of May 2020. The predictions are based on the assumption of a Gaussian time evolution well justified by the central limit theorem of statistics. The width and the maximum time and thus the duration of this Gaussian distribution are determined from a statistical χ^2 -fit to the observed doubling times before March 28, 2020.

Keywords: statistical physics – health science – Gaussian distribution – virus evolution

I. INTRODUCTION

In these days there is a very high interest in the societal, economical and political world to understand the time evolution of the first wave of infections of the population by the current Sars-Cov-2 (corona) virus. The most important issues are the total duration and the peak time of the infection evolution as well as the maximum number of daily infections. It would be most helpful for many people to have a reproducible, crude, but reliable estimate when this pandemic wave is over. It is the purpose of this manuscript to provide such an estimate based on a simplified Gaussian model for the time development of the pandemic outburst.

The best justification for the Gaussian or normal distribution for the virus time evolution is given by the central limit theorem of statistics¹. The central limit theorem states that in situations, when many $n \gg 1$ independent random variables are added, their properly normalized sum tends toward a normal or Gaussian distribution function of the form (1) even if the original variables themselves are not normally distributed. The spread of the virus infection of populations with high number of persons certainly is such a random process to which the central limit theorem is applicable. Each person in a given population has a probability distribution (normalized to unity) as a function of time of being infected: it is a very noncontinuous distribution being 1 at the day of infection and 0 on all other days. If one adds up these discrete distributions of persons living in villages and districts of towns of typical size of about 1000 persons one obtains quasi-continuous probability distributions for be-

ing infected which certainly will be different in hotspots of the disease and isolated rural areas. If we then add up a large number of these village probability distributions for all of Germany we obtain the daily infection rate distribution which according to the central limit is close to a Gaussian distribution.

The analysis of Gaussian distribution functions plays a central role in many problems of statistical physics and plasma physics. E.g. in plasma kinetic theory they are referred to as drift-Maxwellian² or counterstreaming bi-Maxwellian^{3,4} velocity distribution functions. Both authors of this manuscript are not virologists but theoretical physicists in plasma physics and astrophysics (RS) and solid state physics (FS) with past experience in analyzing normal or Gaussian distribution functions.

Apart from consulting several reviews⁵⁻⁷, as non-virologists we are not familiar with the recent relevant virology literature. Nevertheless, it is our hope that in these hard times an estimate by unbiased non-experts might be welcomed by specialists as well as the broad population, especially if some positive information and outlook is provided. We base our parameter estimates on publicly available information, especially by the excellent podcast by Prof. C. Drosten⁸ and the recent sophisticated modelling study for Germany⁷.

II. GAUSSIAN MODEL

Numerical simulations and the empirical data of earlier epidemics⁸ indicate that the time evolution of epidemic waves is characterized by an early exponential rise until a pronounced maximum is reached followed by a rapid decrease. As argued above we adopt a simple Gaussian model for the time evolution of infections and explore its consequences. If $I(t)$ denotes the number of infections

* rsch@tp4.rub.de, schlickeiser@gmail.com

per day, we assume that its time evolution is given by the Gaussian function

$$I(t) = I_0 e^{-\left(\frac{t-E}{\Delta}\right)^2}, \quad (1)$$

shown in Fig. 1, where I_0 denotes the maximum value at time E and Δ denotes the width of the Gaussian.

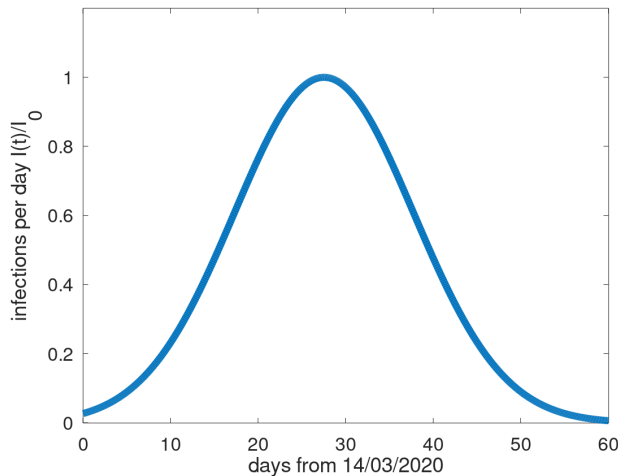


FIG. 1. Prediction of the time evolution $I(t)/I_0$ for Germany for the best fit parameters $E = 27.5$ days and $\Delta = 14.4$ days. The time $t = 0$ corresponds with the date March 14, 2020, the day monitoring of the doubling times and drastic political actions against the virus started.

By monitoring the new daily infections one easily derives the relative change in the infections per day

$$P(t) = \frac{dI(t)/dt}{I(t)} = \frac{d \ln I(t)}{dt} = 2 \frac{E-t}{\Delta^2}, \quad (2)$$

where we used the distribution (1).

A. Doubling time

The monitored data are often given in terms of the doubling time d of the corresponding exponential function at any time

$$I_a(t) = J_0 e^{\frac{t \ln 2}{\Delta^2}} \quad (3)$$

Using the distribution (3) in equation (2) provides for the relative change in daily infection rate

$$P(t) = \frac{d \ln I_a(t)}{dt} = \frac{\ln 2}{d} \quad (4)$$

Equating the two results (2) and (4) leads to the time-dependent Gaussian doubling time

$$d(t) = \frac{A}{E-t}, \quad A = (\ln \sqrt{2}) \Delta^2 = 0.35 \Delta^2 \quad (5)$$

Figure 2 shows the monitored doubling times for Germany⁹ starting on March 15, 2020 until March 28, 2020. We assume that every value has an error of 15 percent. It starts at $d(t=0) = 2.6$ days and increases to $D(t=12) = 4.8 \pm 0.24$ on March 28, 2020.

The Gaussian doubling time modeling then provides $d(t=0) = A/E = 2.6$ days, corresponding to

$$\Delta = \sqrt{\frac{2.6E}{\ln \sqrt{2}}} = \sqrt{7.5E} \quad (6)$$

Moreover, Eq. (5) reduces to

$$d(E, t) = \frac{2.6}{1 - \frac{t}{E}} \quad (7)$$

B. Statistical fit

We determine the value of the only free parameter E in equation (7) by performing a χ^2 -fit to the data shown in Fig. 2. If $m(t_i)$ denote the observed doubling times at days t_i , $\delta m(t_i) = 0.15m(t_i)$ its error and $d(E, t_i)$ the theoretical doubling time for given values of E , we calculate

$$\chi^2(E) = \sum_{i=0}^N \left(\frac{m(t_i) - d(E, t_i)}{\delta m(t_i)} \right)^2 \sum_{i=0}^N \left(\frac{m(t_i) - d(E, t_i)}{0.05m(t_i)} \right)^2 \quad (8)$$

Currently, on March 28, 2020 we have $N = 14$ measurements. With one free parameter the number of degrees of freedom is $N - 1 = 13$.

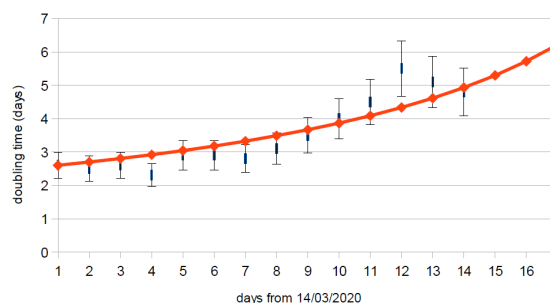


FIG. 2. Monitored doubling times in Germany from March 15 until March 28, 2020 in comparison with the best fit

The best fit with the minimum value of $\chi^2_{\min} = 9.51$ is provided for $E = 27.5$ days. The $\chi^2_{\min, \text{p.d.f}} = 9.51/13 =$

0.73 per degree of freedom is less than unity indicating that our model fits the data very well. For 90 percent confidence all values of $\chi^2 \leq \chi_{\min}^2 + 2.71 = 12.22$ are acceptable¹⁰ yielding with 90 percent confidence that

$$E = 27.5_{-3.4}^{+5.4} \text{ days}, \quad (9)$$

corresponding to April 11, 2020 $_{-3.4}^{+5.4}$ days. Consequently, the best fit Gaussian doubling time for Germany is given by

$$d_{\text{best}} = \frac{71.5}{27.5 - t} \text{ days} \quad (10)$$

As an aside we note that the variation (10) becomes infinitely large as $t \rightarrow 27.5$. Moreover, for times $t > E$ the doubling times becomes a decay half-life approaching 0 for very large times $t \gg E$.

Moreover, after inserting the values (9) equation (6) yields with 90 percent confidence

$$\Delta = 14.4_{-1.0}^{+1.4} \text{ days} \quad (11)$$

In Fig. 3 we show the prediction of the doubling times in Germany until day 25 corresponding to April 8th, 2020.

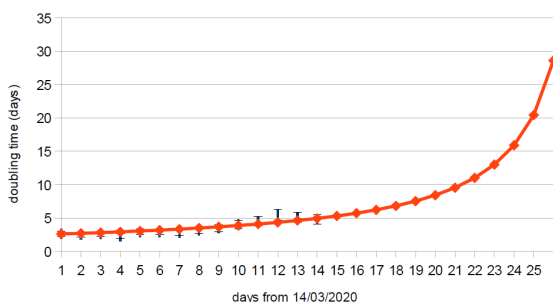


FIG. 3. The same as in Fig. 2 but now the predicted doubling times until day 25 corresponding to April 8, 2020.

III. PREDICTIONS FOR GERMANY

A. Total number of infections

It is known that during the whole duration of the first wave of the virus evolution 70 percent of the total population are infected⁸, if nothing is done to reduce the number of infections. Scaling the total population in units of $10^5 N_5$, we estimate that $0.7q10^5 N_5$ are infected during the whole duration of the first virus wave, where the quarantining factor q accounts for the currently taken

political actions such as quarantining of elder and infected people, social distancing actions in the society as well as the closure of schools and daycare facilities.

Integrating the Gaussian (1) over all times we then obtain

$$\begin{aligned} 7 \cdot 10^5 q N_5 &= I_0 \int_{-\infty}^{\infty} dt e^{-\left(\frac{t-E}{\Delta}\right)^2} \\ &= I_0 \Delta \int_{-\infty}^{\infty} dx e^{-x^2} = \sqrt{\pi} I_0 \Delta, \end{aligned} \quad (12)$$

where we used the integral $\int_{-\infty}^{\infty} dx e^{-x^2} = \sqrt{\pi}$. Equation (12) yields for the maximum value

$$I_0 = \frac{7 \cdot 10^4 q N_5}{\sqrt{\pi} \Delta} = \frac{4 \cdot 10^4 q N_5}{\Delta} \quad (13)$$

With the 90 percent confidence value for Δ from equation (11) we obtain with the same confidence level for the maximum value (13)

$$I_0 = (2.78_{-0.22}^{+0.20}) \cdot 10^3 q N_5 \quad (14)$$

B. Manageable infections

We assume as typical medical parameters those suggested by the recent modeling by the Robert-Koch-Institute⁷ (see their Fig. 1): only about 20 percent of the infected people are seriously infected, 5 percent have to be hospitalized and 1α percent need access to breathing apparati for typically $1w$ week, corresponding to $7w$ days. We refer to the latter as NSSPs standing for new seriously sick persons per day. As these numbers are uncertain we keep their scalings with the typically adopted numbers.

In Germany there are at most 56000 breathing apparati in total available, corresponding for a population of 80 million people to $70b_{70}$ breathing apparati available per $10^5 N_5$ people. As a consequence, every day the hospitals can handle I_n NSSPs with

$$I_n = \frac{70b_{70}N_5}{7w} = 10 \frac{b_{70}N_5}{w} \quad (15)$$

The infections are handable by hospitals for all times if at the maximum of the virus evolution $0.01\alpha I_0$, denoting the maximum number of seriously sick persons per day needing access to breathing apparati, is less or equal to I_n , i.e.

$$0.01\alpha I_0 \leq 10 \frac{b_{70}N_5}{w} \quad (16)$$

Inserting the value (14) for the maximum value I_0 , the quantity N_5 cancels out and we obtain with 90 percent confidence the condition

$$(2.78_{-0.24}^{+0.20})\alpha q \leq \frac{b_{70}}{w}, \quad (17)$$

which is equivalent to

$$\frac{\alpha q w}{b_{70}} \leq 0.36_{-0.03}^{+0.04} \quad (18)$$

In order to handle all serious infections in German hospitals the condition (18) has to be fulfilled. It seems that German hospitals can only ensure the best treatment of all NSSPs at the maximum of first wave if either (1) the number of available breathing apparati can be increased by a factor of 3, corresponding to $b = 210$ per day. or (2) the quarantaining factor q can be reduced to $q = 0.36_{-0.02}^{+0.03} \simeq 1/3$. The first option is unrealistic on short time scales. To achieve the second option of the reducing the quarantaining factor q to about 0.3 by the currently taken social distancing and quarantaining activities seems to be realistically achievable in Germany. We therefore will adopt this optimistic value $q = 0.3q_{0.3}$ in our further predictions. However we note that with such a small quarantaining factor only $21000N_5$ will be infected during the whole first wave of the virus, so that additionally waves are likely to occur in the future.

It is important to notice that the outbreak of serious sickness syndroms of NSSPs is delayed to the infection time by about $\tau = 7$ days⁸. This delay time has to be added to the above derived maximum time scale E , so that $E + \tau = 34.5_{-3.4}^{+5.4}$ days, corresponding to April 18, 2020 $_{-3.4}^{+5.4}$ is the predicted day in Germany when the maximum number of NSSPs has to be treated.

C. Duration of the first wave

The number of infections are significantly reduced by a factor 10^3 compared to the maximum I_0 at the time

$$T = E + 2.63\Delta = 65.4_{-6.1}^{+9.1} \text{ days} \quad (19)$$

with 90 percent confidence. Consequently, the first pandemic wave will be over in Germany not before 65 days or about 2 months with the indicated uncertainty. This corresponds to 38 ± 4 days after the time of maximum.

According to our predictions, the first pandemic wave in Germany will reach its maximum by April 18, 2020 when about about $(8.3 \pm 0.78)q_{0.3}N_5$ NSSPs have to be treated in the hospitals. The wave has a broad distribution from April 6 to April 30, 2020 with more than $(4.2 \pm 0.39)q_{0.3}N_5$ but less than $(8.3 \pm 0.78)q_{0.3}N_5$ NSSPs per day. The number of NSSPs needed to be treated at hospitals will sharply drop to less than $(0.0083 \pm 0.00078)q_{0.30}N_5$ NSSPs by May 26th, 2020.

As Germany has a population of about 80 million persons we have $N_5 = 800$. Therefore in absolute numbers German hospitals will have to cope with $(6640 \pm 624)q_{0.3}$ NSSPs at the maximum of the outburst on April 18th, 2020, more than $(3360 \pm 312)q_{0.3}$ but less than 6640 ± 624 NSSPs per day between April 6 and April 30, 2020, before the total number per day drops below $(6.64 \pm 0.63)q_{0.3}$ NSSPs after the end of May 2020. All errors have 90 percent confidence.

Our analysis can be applied to other countries too if reliable information on the early doubling times are available. We plan to test our modeling with the data from the past first corona wave in China.

D. Final important remark

We end with a sentence of caution: although the central limit theorem provides us with a very good justification of the adopted Gaussian time distribution function it is not guaranteed that the actual virus time evolution follows this behavior. We will only know for sure after the first pandemic wave is over. So it is possible that our estimates and we are wrong. We take this risk because we are convinced that many persons will welcome our optimistic estimate that the first wave is over by end of May 2020. There is light at the end of a long tunnel. Our estimate might also help decision makers when to lift the current societal and economical lockdown.

-
1. Feller, W., An introduction to probability theory and its applications (Wiley, New York, 1971)
 2. Jackson, E. A., Phys. of Fluids **3**, 786 (1960)
 3. Hadi, F., Bashir, M. F., Qamar, A., Yoon, P. H., Schlickeiser, R., Phys. Plasmas **21**, 052111 (2014)
 4. Vafin, S., Lazar, M., Schlickeiser, R., Phys. Plasmas **22**, 022129 (2015)
 5. Anderson, R. M., Anderson, R., May, R. M., Infectious diseases of humans: dynamics and control, (Oxford University Press, Oxford, 1992)
 6. Hethcote, H. W., SIAM Review **42**, 599 (2000)
 7. an der Heiden, M., Buchholz, U., Modellierung von Beispielszenarien an der SARS-CoV-2 Epidemie 2020 in Deutschland, doi 10.25646/6571.2 (2020) (in German)
 8. Drosten, C., Coronavirusupdate (ndr.de/coronaupdate, 2020) (in German)
 9. Endt, C., Witzenberger, B., Süddeutsche Zeitung Online, Coronavirus in Deutschland (2020)

10. Lampton, M., Morgan, B., Bowyer, S., *Astrophys. J.* **208**, 177 (1976)

IV. DEUTSCHE ZUSAMMENFASSUNG: CORONA IN DEUTSCHLAND VORBEI ENDE MAI?

Mit heutigen Datum 30. März 2020 wird vorhergesagt, dass mit 90-prozentiger Konfidenz die erste Welle der Corona-Pandemie in Deutschland die maximale Zahl von neuinfizierten Personen am 12. April 2020 ${}^{+5.4}_{-3.4}$ Tage erreicht. Mit einer Verzögerungszeit von etwa 7 Tagen wird dann am 19. April 2020 ${}^{+5.4}_{-3.4}$ Tage der höchste Ansturm auf Beatmungsgeräte in den Krankenhäusern erfolgen.

Die erste Welle wird gegen Ende Mai 2020 in Deutschland enden mit einem tausendstel kleineren Neuinfektionsraten. Diese Vorhersagen basieren auf der Annahme einer Gauss-förmigen Zeitverteilung der Infizierungsrate, die gut durch den zentralen Grenzwertsatz der Statistik begründet ist. Die Breite und die Zeit des Maximums der Gauss-Verteilung und damit deren Gesamtdauer werden durch einen statistischen χ^2 -Fit an die in Deutschland beobachteten Verdopplungszeiten vor dem 28. März 2020 bestimmt. Die Behandlung aller schwer erkrankten Patienten mit Beatmungsgeräten ist gewährleistet, wenn es durch die andauernden Quarantäne- und soziale Distanzierungs-Massnahmen gelingt, die Anzahl der infizierten Personen in der Bevölkerung durch die erste Welle unter 30 Prozent zu halten.